

MLD Antibody

Rabbit mAb

Catalog # AP93007

Product Information

Application	WB
Primary Accession	O15121
Reactivity	Human
Clonality	Monoclonal
Other Names	DEGS 1; DEGS; DES1; FADS7; MIG15; MLD;
Isotype	Rabbit IgG
Host	Rabbit
Calculated MW	37866

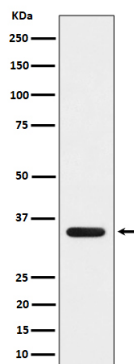
Additional Information

Dilution	WB 1:500~1:2000
Purification	Affinity-chromatography
Immunogen	A synthesized peptide derived from human MLD
Description	DEGS1 is a member of the membrane fatty acid desaturase family which is responsible for inserting double bonds into specific positions in fatty acids. It contains three His containing consensus motifs that are characteristic of a group of membrane fatty acid desaturases.
Storage Condition and Buffer	Rabbit IgG in phosphate buffered saline , pH 7.4, 150mM NaCl, 0.02% sodium azide and 50% glycerol. Store at +4°C short term. Store at -20°C long term. Avoid freeze / thaw cycle.

Protein Information

Name	DEGS1 (HGNC:13709)
Synonyms	DES1, MLD
Function	Has sphingolipid-delta-4-desaturase activity. Converts D-erythro-sphinganine to D-erythro-sphingosine (E-sphing-4-enine) (PubMed: 11937514 , PubMed: 30620337 , PubMed: 30620338). Catalyzes the equilibrium isomerization of retinols (By similarity).
Cellular Location	Mitochondrion membrane. Endoplasmic reticulum membrane; Multi-pass membrane protein
Tissue Location	Ubiquitous..

Images



Western blot analysis of MLD expression in 293 cell lysate.

Please note: All products are 'FOR RESEARCH USE ONLY. NOT FOR USE IN DIAGNOSTIC OR THERAPEUTIC PROCEDURES'.