

TCEA1 Antibody

Rabbit mAb

Catalog # AP93009

Product Information

Application	WB, IHC, IF, FC, ICC, IP, IHF
Primary Accession	P23193
Reactivity	Rat, Human, Mouse
Clonality	Monoclonal
Other Names	GTF2S; TCEA; Tcea1; TF2S; TFIIS;
Isotype	Rabbit IgG
Host	Rabbit
Calculated MW	33970

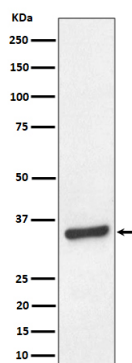
Additional Information

Dilution	WB 1:500~1:2000 IHC 1:50~1:200 ICC/IF 1:50~1:200 IP 1:50 FC 1:50
Purification	Affinity-chromatography
Immunogen	A synthesized peptide derived from human TCEA1
Description	Necessary for efficient RNA polymerase II transcription elongation past template-encoded arresting sites. The arresting sites in DNA have the property of trapping a certain fraction of elongating RNA polymerases that pass through, resulting in locked ternary complexes.
Storage Condition and Buffer	Rabbit IgG in phosphate buffered saline , pH 7.4, 150mM NaCl, 0.02% sodium azide and 50% glycerol. Store at +4°C short term. Store at -20°C long term. Avoid freeze / thaw cycle.

Protein Information

Name	TCEA1
Synonyms	GTF2S, TFIIS
Function	Necessary for efficient RNA polymerase II transcription elongation past template-encoded arresting sites. The arresting sites in DNA have the property of trapping a certain fraction of elongating RNA polymerases that pass through, resulting in locked ternary complexes. Cleavage of the nascent transcript by S-II allows the resumption of elongation from the new 3'-terminus.
Cellular Location	Nucleus.

Images



Western blot analysis of TCEA1 expression in HeLa cell lysate.

Please note: All products are 'FOR RESEARCH USE ONLY. NOT FOR USE IN DIAGNOSTIC OR THERAPEUTIC PROCEDURES'.