

SAFB Antibody

Rabbit mAb

Catalog # AP93013

Product Information

Application	WB, IHC, IF, ICC, IHF
Primary Accession	Q15424
Reactivity	Rat, Human, Mouse
Clonality	Monoclonal
Other Names	HAP; HET; SAFB; SAFB1;
Isotype	Rabbit IgG
Host	Rabbit
Calculated MW	102642

Additional Information

Dilution	WB 1:500~1:2000 IHC 1:50~1:200 ICC/IF 1:50~1:200
Purification	Affinity-chromatography
Immunogen	A synthesized peptide derived from human SAFB
Description	Binds to scaffold/matrix attachment region (S/MAR) DNA and forms a molecular assembly point to allow the formation of a 'transcriptosomal' complex (consisting of SR proteins and RNA polymerase II) coupling transcription and RNA processing (By similarity). Can function as an estrogen receptor corepressor and can also bind to the HSP27 promoter and decrease its transcription. Can inhibit cell proliferation.
Storage Condition and Buffer	Rabbit IgG in phosphate buffered saline , pH 7.4, 150mM NaCl, 0.02% sodium azide and 50% glycerol. Store at +4°C short term. Store at -20°C long term. Avoid freeze / thaw cycle.

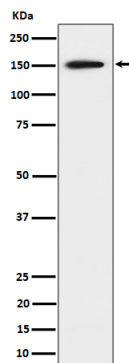
Protein Information

Name	SAFB
Synonyms	HAP, HET, SAFB1
Function	Binds to scaffold/matrix attachment region (S/MAR) DNA and forms a molecular assembly point to allow the formation of a 'transcriptosomal' complex (consisting of SR proteins and RNA polymerase II) coupling transcription and RNA processing (PubMed: 9671816). Functions as an estrogen receptor corepressor and can also bind to the HSP27 promoter and decrease its transcription (PubMed: 12660241). Thereby acts as a negative regulator of cell proliferation (PubMed: 12660241). When associated with RBMX, binds to and stimulates transcription from the SREBF1 promoter (By similarity).
Cellular Location	Nucleus

Tissue Location

Ubiquitous. Expressed at high levels in the CNS and at low levels in the liver.
Expressed in a wide number of breast cancer cell lines

Images



Western blot analysis of SAFB expression in 293 cell lysate.

Please note: All products are 'FOR RESEARCH USE ONLY. NOT FOR USE IN DIAGNOSTIC OR THERAPEUTIC PROCEDURES'.