

AZI2 Antibody

Rabbit mAb

Catalog # AP93017

Product Information

Application	WB, IF, ICC
Primary Accession	Q9H6S1
Reactivity	Rat, Human, Mouse
Clonality	Monoclonal
Other Names	AZ2; AZI2; Nak associated protein 1; NAP1; TILP;
Isotype	Rabbit IgG
Host	Rabbit
Calculated MW	44935

Additional Information

Dilution	WB 1:500~1:2000 ICC/IF 1:50~1:200
Purification	Affinity-chromatography
Immunogen	A synthesized peptide derived from human AZI2
Description	Activates serine/threonine-protein kinase TBK1 and facilitates its oligomerization. Enhances the phosphorylation of NF-kappa-B p65 subunit RELA by TBK1. Promotes TBK1-induced as well as TNF-alpha or PMA-induced activation of NF-kappa-B. Participates in IFN-beta promoter activation via TICAM1.
Storage Condition and Buffer	Rabbit IgG in phosphate buffered saline , pH 7.4, 150mM NaCl, 0.02% sodium azide and 50% glycerol. Store at +4°C short term. Store at -20°C long term. Avoid freeze / thaw cycle.

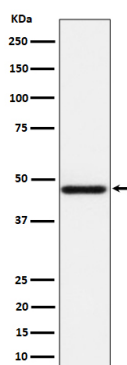
Protein Information

Name	AZI2
Synonyms	NAP1 {ECO:0000303 PubMed:14560022}, TBKB
Function	Adapter protein which binds TBK1 and IKBKE playing a role in antiviral innate immunity (PubMed: 14560022 , PubMed: 21931631). Activates serine/threonine-protein kinase TBK1 and facilitates its oligomerization (PubMed: 14560022 , PubMed: 21931631). Enhances the phosphorylation of NF-kappa-B p65 subunit RELA by TBK1 (PubMed: 14560022 , PubMed: 21931631). Promotes TBK1-induced as well as TNF-alpha or PMA-induced activation of NF-kappa-B (PubMed: 14560022 , PubMed: 21931631). Participates in IFNB promoter activation via TICAM1 (PubMed: 15611223).
Cellular Location	Cytoplasm.

Tissue Location

Widely expressed (PubMed:14560022). Abundant expression seen in the pancreas and testis (PubMed:14560022)

Images



Western blot analysis of AZI2 expression in HeLa cell lysate.

Please note: All products are 'FOR RESEARCH USE ONLY. NOT FOR USE IN DIAGNOSTIC OR THERAPEUTIC PROCEDURES'.