

MYO1B Antibody

Rabbit mAb

Catalog # AP93020

Product Information

| | |
|--------------------------|---------------------------------------|
| Application | WB, IHC |
| Primary Accession | O43795 |
| Reactivity | Rat, Human, Mouse |
| Clonality | Monoclonal |
| Other Names | MMI alpha; MMIa; MYH 1c; Myo1b; myr1; |
| Isotype | Rabbit IgG |
| Host | Rabbit |
| Calculated MW | 131985 |

Additional Information

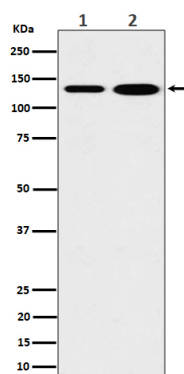
| | |
|-------------------------------------|---|
| Dilution | WB 1:500~1:2000 IHC 1:50~1:200 |
| Purification | Affinity-chromatography |
| Immunogen | A synthesized peptide derived from human MYO1B |
| Description | Motor protein that may participate in process critical to neuronal development and function such as cell migration, neurite outgrowth and vesicular transport. |
| Storage Condition and Buffer | Rabbit IgG in phosphate buffered saline , pH 7.4, 150mM NaCl, 0.02% sodium azide and 50% glycerol. Store at +4°C short term. Store at -20°C long term. Avoid freeze / thaw cycle. |

Protein Information

| | |
|-----------------|--|
| Name | MYO1B |
| Function | Motor protein that may participate in process critical to neuronal development and function such as cell migration, neurite outgrowth and vesicular transport. |

Images

Western blot analysis of MYO1B expression in (1) 293 cell lysate; (2) Mouse heart lysate.



Please note: All products are 'FOR RESEARCH USE ONLY. NOT FOR USE IN DIAGNOSTIC OR THERAPEUTIC PROCEDURES'.