

TNS4 Antibody

Rabbit mAb

Catalog # AP93023

Product Information

Application	WB
Primary Accession	Q8IZW8
Reactivity	Rat, Human, Mouse
Clonality	Monoclonal
Other Names	CTEN; Tensin 4; Tns4;
Isotype	Rabbit IgG
Host	Rabbit
Calculated MW	76764

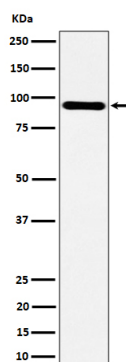
Additional Information

Dilution	WB 1:500~1:2000
Purification	Affinity-chromatography
Immunogen	A synthesized peptide derived from human TNS4
Description	May be involved in cell migration, cartilage development and in linking signal transduction pathways to the cytoskeleton (By similarity). May promote apoptosis, via its cleavage by caspase-3.
Storage Condition and Buffer	Rabbit IgG in phosphate buffered saline , pH 7.4, 150mM NaCl, 0.02% sodium azide and 50% glycerol. Store at +4°C short term. Store at -20°C long term. Avoid freeze / thaw cycle.

Protein Information

Name	TNS4
Synonyms	CTEN
Function	Promotes EGF-induced cell migration by displacing tensin TNS3 from the cytoplasmic tail of integrin ITGB1 which results in dissociation of TNS3 from focal adhesions, disassembly of actin stress fibers and initiation of cell migration (PubMed: 17643115). Suppresses ligand-induced degradation of EGFR by reducing EGFR ubiquitination in the presence of EGF (PubMed: 23774213). Increases MET protein stability by inhibiting MET endocytosis and subsequent lysosomal degradation which leads to increased cell survival, proliferation and migration (PubMed: 24814316).
Cellular Location	Cell junction, focal adhesion. Cytoplasm, cytoskeleton
Tissue Location	Expressed at low levels in colon (at protein level) (PubMed:19214987, PubMed:19487278). Expressed in prostate and placenta (PubMed:12154022).

Images



Western blot analysis of TNS4 expression in HepG2 cell lysate.

Please note: All products are 'FOR RESEARCH USE ONLY. NOT FOR USE IN DIAGNOSTIC OR THERAPEUTIC PROCEDURES'.