

PSMB10 Antibody

Rabbit mAb

Catalog # AP93029

Product Information

Application	WB, IHC
Primary Accession	P40306
Reactivity	Rat, Human, Mouse
Clonality	Monoclonal
Other Names	LMP10; MECL1; Psmb10;
Isotype	Rabbit IgG
Host	Rabbit
Calculated MW	28936

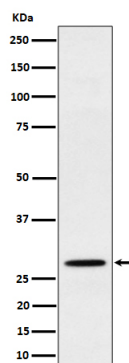
Additional Information

Dilution	WB 1:500~1:2000 IHC 1:50~1:200
Purification	Affinity-chromatography
Immunogen	A synthesized peptide derived from human PSMB10
Description	The proteasome is a multicatalytic proteinase complex which is characterized by its ability to cleave peptides with Arg, Phe, Tyr, Leu, and Glu adjacent to the leaving group at neutral or slightly basic pH. The proteasome has an ATP-dependent proteolytic activity. This subunit is involved in antigen processing to generate class I binding peptides.
Storage Condition and Buffer	Rabbit IgG in phosphate buffered saline , pH 7.4, 150mM NaCl, 0.02% sodium azide and 50% glycerol. Store at +4°C short term. Store at -20°C long term. Avoid freeze / thaw cycle.

Protein Information

Name	PSMB10
Synonyms	LMP10, MECL1
Function	The proteasome is a multicatalytic proteinase complex which is characterized by its ability to cleave peptides with Arg, Phe, Tyr, Leu, and Glu adjacent to the leaving group at neutral or slightly basic pH. The proteasome has an ATP-dependent proteolytic activity. This subunit is involved in antigen processing to generate class I binding peptides.
Cellular Location	Cytoplasm {ECO:0000255 PROSITE-ProRule:PRU00809}. Nucleus

Images



Western blot analysis of PSMB10 expression in Raji cell lysate.

Please note: All products are 'FOR RESEARCH USE ONLY. NOT FOR USE IN DIAGNOSTIC OR THERAPEUTIC PROCEDURES'.