

TMEM43 Antibody

Rabbit mAb

Catalog # AP93034

Product Information

Application	WB, IHC
Primary Accession	Q9BTV4
Reactivity	Rat, Human, Mouse
Clonality	Monoclonal
Other Names	ARVC5; ARVD5; EDMD7; LUMA; Tmem43; Transmembrane protein 43;
Isotype	Rabbit IgG
Host	Rabbit
Calculated MW	44876

Additional Information

Dilution	WB 1:500~1:2000 IHC 1:50~1:200
Purification	Affinity-chromatography
Immunogen	A synthesized peptide derived from human TMEM43
Description	May have an important role in maintaining nuclear envelope structure by organizing protein complexes at the inner nuclear membrane. Required for retaining emerin at the inner nuclear membrane.
Storage Condition and Buffer	Rabbit IgG in phosphate buffered saline , pH 7.4, 150mM NaCl, 0.02% sodium azide and 50% glycerol. Store at +4°C short term. Store at -20°C long term. Avoid freeze / thaw cycle.

Protein Information

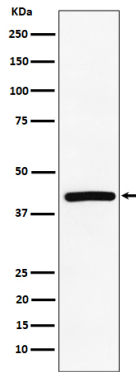
Name	TMEM43
Function	May have an important role in maintaining nuclear envelope structure by organizing protein complexes at the inner nuclear membrane. Required for retaining emerin at the inner nuclear membrane (By similarity). Plays a role in the modulation of innate immune signaling through the cGAS-STING pathway by interacting with RNF26 (PubMed: 32614325). In addition, functions as a critical signaling component in mediating NF-kappa-B activation by acting downstream of EGFR and upstream of CARD10 (PubMed: 27991920). Contributes to passive conductance current in cochlear glia-like supporting cells, mediated by gap junctions and necessary for hearing and speech discrimination (PubMed: 34050020).
Cellular Location	Endoplasmic reticulum membrane. Nucleus inner membrane; Multi-pass membrane protein. Cell membrane Note=Retained in the inner nuclear membrane through interaction with EMD and A- and B-lamins. The N- and C-termini are oriented towards the nucleoplasm. The majority of the hydrophilic domain resides in the endoplasmic reticulum lumen (By

similarity).

Tissue Location

Highest expression in placenta. Also found at lower levels in heart, ovary, spleen, small intestine, thymus, prostate and testis.

Images



Western blot analysis of TMEM43 expression in Jurkat cell lysate.

Please note: All products are 'FOR RESEARCH USE ONLY. NOT FOR USE IN DIAGNOSTIC OR THERAPEUTIC PROCEDURES'.