

FAM50A Antibody

Rabbit mAb

Catalog # AP93040

Product Information

Application	WB, IHC, IF, ICC, IHF
Primary Accession	Q14320
Reactivity	Rat, Human, Mouse
Clonality	Monoclonal
Other Names	fam50a; HXC26; XAP5;
Isotype	Rabbit IgG
Host	Rabbit
Calculated MW	40242

Additional Information

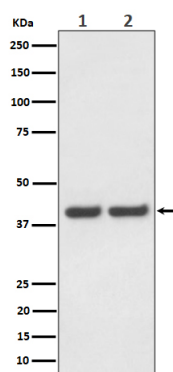
Dilution	WB 1:500~1:2000 IHC 1:50~1:200 ICC/IF 1:50~1:200
Purification	Affinity-chromatography
Immunogen	A synthesized peptide derived from human FAM50A
Description	May be a DNA-binding protein or transcriptional factor.
Storage Condition and Buffer	Rabbit IgG in phosphate buffered saline , pH 7.4, 150mM NaCl, 0.02% sodium azide and 50% glycerol. Store at +4°C short term. Store at -20°C long term. Avoid freeze / thaw cycle.

Protein Information

Name	FAM50A
Synonyms	DXS9928E, HXC26, XAP5
Function	Probably involved in the regulation of pre-mRNA splicing.
Cellular Location	Nucleus.
Tissue Location	Widely expressed in fetal and adult tissues. Mostly abundant in fetal brain, liver and kidney; in the adult, high levels were also observed in heart, skeletal muscle, spleen, thymus, prostate and small intestine. Expressed in fetal cerebellum and hypothalamus Low expression is observed in fetal temporal lobe (PubMed:32703943)

Images

Western blot analysis of FAM50A expression in (1) HeLa cell lysate; (2) Raw264.7 cell lysate.



Please note: All products are 'FOR RESEARCH USE ONLY. NOT FOR USE IN DIAGNOSTIC OR THERAPEUTIC PROCEDURES'.