

# SEC24D Antibody

Rabbit mAb

Catalog # AP93046

## Product Information

Application	WB
Primary Accession	<a href="#">O94855</a>
Reactivity	Rat, Human, Mouse
Clonality	Monoclonal
Other Names	SEC24 family member D; SEC24D;
Isotype	Rabbit IgG
Host	Rabbit
Calculated MW	113010

## Additional Information

Dilution	WB 1:500~1:2000
Purification	Affinity-chromatography
Immunogen	A synthesized peptide derived from human SEC24D
Description	Component of the COPII coat, that covers ER-derived vesicles involved in transport from the endoplasmic reticulum to the Golgi apparatus. COPII acts in the cytoplasm to promote the transport of secretory, plasma membrane, and vacuolar proteins from the endoplasmic reticulum to the Golgi complex.
Storage Condition and Buffer	Rabbit IgG in phosphate buffered saline , pH 7.4, 150mM NaCl, 0.02% sodium azide and 50% glycerol. Store at +4°C short term. Store at -20°C long term. Avoid freeze / thaw cycle.

## Protein Information

Name	SEC24D ( <a href="#">HGNC:10706</a> )
Function	Component of the coat protein complex II (COPII) which promotes the formation of transport vesicles from the endoplasmic reticulum (ER). The coat has two main functions, the physical deformation of the endoplasmic reticulum membrane into vesicles and the selection of cargo molecules for their transport to the Golgi complex (PubMed: <a href="#">17499046</a> , PubMed: <a href="#">18843296</a> , PubMed: <a href="#">20427317</a> ). Plays a central role in cargo selection within the COPII complex and together with SEC24C may have a different specificity compared to SEC24A and SEC24B (PubMed: <a href="#">17499046</a> , PubMed: <a href="#">18843296</a> , PubMed: <a href="#">20427317</a> ). May more specifically package GPI-anchored proteins through the cargo receptor TMED10 (PubMed: <a href="#">20427317</a> ). May also be specific for IxM motif-containing cargos like the SNAREs GOSR2 and STX5 (PubMed: <a href="#">18843296</a> ).
Cellular Location	Cytoplasmic vesicle, COPII-coated vesicle membrane; Peripheral membrane protein {ECO:0000250 UniProtKB:P53992}; Cytoplasmic side

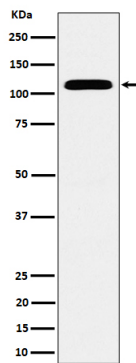
{ECO:0000250|UniProtKB:P53992}. Endoplasmic reticulum membrane;  
Peripheral membrane protein {ECO:0000250|UniProtKB:P53992};  
Cytoplasmic side {ECO:0000250|UniProtKB:P53992}. Cytoplasm, cytosol  
{ECO:0000250|UniProtKB:P53992}

## Tissue Location

Ubiquitously expressed, with higher amounts in placenta, pancreas, heart and liver.

## Images

---



Western blot analysis of SEC24D expression in HeLa cell lysate.

Please note: All products are 'FOR RESEARCH USE ONLY. NOT FOR USE IN DIAGNOSTIC OR THERAPEUTIC PROCEDURES'.