

# PWP1 Antibody

Rabbit mAb

Catalog # AP93047

## Product Information

---

<b>Application</b>	WB
<b>Primary Accession</b>	<a href="#">Q13610</a>
<b>Reactivity</b>	Rat, Human, Mouse
<b>Clonality</b>	Monoclonal
<b>Other Names</b>	PWP1;
<b>Isotype</b>	Rabbit IgG
<b>Host</b>	Rabbit
<b>Calculated MW</b>	55828

## Additional Information

---

<b>Dilution</b>	WB 1:500~1:2000
<b>Purification</b>	Affinity-chromatography
<b>Immunogen</b>	A synthesized peptide derived from human PWP1
<b>Description</b>	May play an important role in cell growth and/or transcription.
<b>Storage Condition and Buffer</b>	Rabbit IgG in phosphate buffered saline , pH 7.4, 150mM NaCl, 0.02% sodium azide and 50% glycerol. Store at +4°C short term. Store at -20°C long term. Avoid freeze / thaw cycle.

## Protein Information

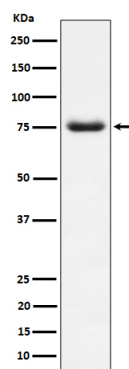
---

<b>Name</b>	PWP1
<b>Function</b>	Chromatin-associated factor that regulates transcription (PubMed: <a href="#">29065309</a> ). Regulates Pol I-mediated rRNA biogenesis and, probably, Pol III-mediated transcription (PubMed: <a href="#">29065309</a> ). Regulates the epigenetic status of rDNA (PubMed: <a href="#">29065309</a> ).
<b>Cellular Location</b>	Nucleus. Nucleus, nucleolus. Chromosome. Note=Associates with chromatin regions of rDNA.
<b>Tissue Location</b>	High levels seen in the placenta, skeletal muscle, kidney and pancreas while lower levels were seen in the heart, brain and lung

## Images

---

Western blot analysis of PWP1 expression in HepG2 cell lysate.



Please note: All products are 'FOR RESEARCH USE ONLY. NOT FOR USE IN DIAGNOSTIC OR THERAPEUTIC PROCEDURES'.