

UCL5IP Antibody

Rabbit mAb

Catalog # AP93051

Product Information

Application	WB, IHC, IP
Primary Accession	Q99871
Reactivity	Human
Clonality	Monoclonal
Other Names	Haus7; HSXQ28ORF; UCL5IP; UIP1;
Isotype	Rabbit IgG
Host	Rabbit
Calculated MW	39794

Additional Information

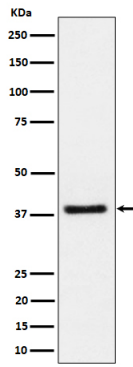
Dilution	WB 1:500~1:2000 IHC 1:50~1:200 IP 1:50
Purification	Affinity-chromatography
Immunogen	A synthesized peptide derived from human UCL5IP
Description	Contributes to mitotic spindle assembly, maintenance of centrosome integrity and completion of cytokinesis as part of the HAUS augmin-like complex.
Storage Condition and Buffer	Rabbit IgG in phosphate buffered saline , pH 7.4, 150mM NaCl, 0.02% sodium azide and 50% glycerol. Store at +4°C short term. Store at -20°C long term. Avoid freeze / thaw cycle.

Protein Information

Name	HAUS7
Synonyms	UCL5IP, UIP1
Function	Contributes to mitotic spindle assembly, maintenance of centrosome integrity and completion of cytokinesis as part of the HAUS augmin-like complex.
Cellular Location	Cytoplasm, cytoskeleton, microtubule organizing center, centrosome. Cytoplasm, cytoskeleton, spindle. Note=Localizes to interphase centrosomes and to mitotic spindle microtubules.
Tissue Location	Detected in spleen, thymus, testis, ovary, small intestine and colon, with highest levels of expression in testis and ovary.

Images

Western blot analysis of UCHL5IP expression in Jurkat cell lysate.



Please note: All products are 'FOR RESEARCH USE ONLY. NOT FOR USE IN DIAGNOSTIC OR THERAPEUTIC PROCEDURES'.