

RAB45 Antibody

Rabbit mAb

Catalog # AP93052

Product Information

Application	WB, IF, FC, ICC
Primary Accession	Q8IZ41
Reactivity	Rat, Human, Mouse
Clonality	Monoclonal
Other Names	RAB45;
Isotype	Rabbit IgG
Host	Rabbit
Calculated MW	82879

Additional Information

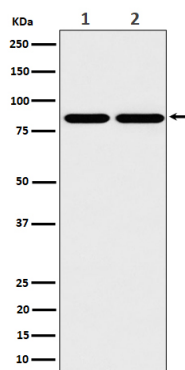
Dilution	WB 1:500~1:2000 ICC/IF 1:50~1:200 FC 1:50
Purification	Affinity-chromatography
Immunogen	A synthesized peptide derived from human RAB45
Description	Binds predominantly GDP, and also GTP (PubMed:17448446). Acts as a dynein adapter protein that activates dynein-mediated transport and dynein-dynactin motility on microtubules (PubMed:30814157).
Storage Condition and Buffer	Rabbit IgG in phosphate buffered saline , pH 7.4, 150mM NaCl, 0.02% sodium azide and 50% glycerol. Store at +4°C short term. Store at -20°C long term. Avoid freeze / thaw cycle.

Protein Information

Name	RASEF
Synonyms	RAB45
Function	Binds predominantly GDP, and also GTP (PubMed: 17448446). Acts as a dynein adapter protein that activates dynein-mediated transport and dynein-dynactin motility on microtubules (PubMed: 30814157).
Cellular Location	Cytoplasm, perinuclear region
Tissue Location	Down-regulated in cutaneous melanoma cells but not in breast cancer cells.

Images

Western blot analysis of RAB45 expression in (1) A431 cell lysate; (2) Raw264.7 cell lysate.



Please note: All products are 'FOR RESEARCH USE ONLY. NOT FOR USE IN DIAGNOSTIC OR THERAPEUTIC PROCEDURES'.