

HMGCL Antibody

Rabbit mAb

Catalog # AP93054

Product Information

Application	WB, IHC
Primary Accession	P35914
Reactivity	Human
Clonality	Monoclonal
Other Names	HMG CoA lyase; HMGCL; Hydroxymethylglutaricaciduria; MS725;
Isotype	Rabbit IgG
Host	Rabbit
Calculated MW	34360

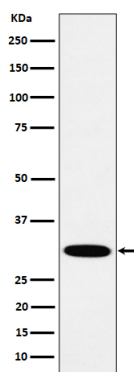
Additional Information

Dilution	WB 1:500~1:2000 IHC 1:50~1:200
Purification	Affinity-chromatography
Immunogen	A synthesized peptide derived from human HMGCL
Description	Involved in the catabolism of branched amino acids such as leucine.
Storage Condition and Buffer	Rabbit IgG in phosphate buffered saline , pH 7.4, 150mM NaCl, 0.02% sodium azide and 50% glycerol. Store at +4°C short term. Store at -20°C long term. Avoid freeze / thaw cycle.

Protein Information

Name	HMGCL
Function	Mitochondrial 3-hydroxy-3-methylglutaryl-CoA lyase that catalyzes a cation-dependent cleavage of (S)-3-hydroxy-3- methylglutaryl-CoA into acetyl-CoA and acetoacetate, a key step in ketogenesis. Terminal step in leucine catabolism. Ketone bodies (beta- hydroxybutyrate, acetoacetate and acetone) are essential as an alternative source of energy to glucose, as lipid precursors and as regulators of metabolism.
Cellular Location	Mitochondrion matrix {ECO:0000250 UniProtKB:P38060}. Peroxisome {ECO:0000250 UniProtKB:P38060}. Note=Unprocessed form is peroxisomal {ECO:0000250 UniProtKB:P38060}
Tissue Location	Highest expression in liver. Expressed in pancreas, kidney, intestine, testis, fibroblasts and lymphoblasts. Very low expression in brain and skeletal muscle. The relative expression of isoform 2 (at mRNA level) is highest in heart (30%), skeletal muscle (22%), and brain (14%).

Images



Western blot analysis of HMGCL expression in A431 cell lysate.

Please note: All products are 'FOR RESEARCH USE ONLY. NOT FOR USE IN DIAGNOSTIC OR THERAPEUTIC PROCEDURES'.