

PMF1 Antibody

Rabbit mAb

Catalog # AP93067

Product Information

| | |
|--------------------------|-------------------------------------|
| Application | WB, IP |
| Primary Accession | Q6P1K2 |
| Reactivity | Rat, Human, Mouse |
| Clonality | Monoclonal |
| Other Names | Pmf1; Polyamine modulated factor 1; |
| Isotype | Rabbit IgG |
| Host | Rabbit |
| Calculated MW | 23339 |

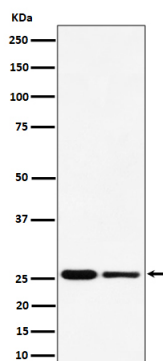
Additional Information

| | |
|-------------------------------------|---------------------------------------------------------------------------------------------------------------------------------------------------------------------------------------------------------------------------------------------------------|
| Dilution | WB 1:500~1:2000 IP 1:50 |
| Purification | Affinity-chromatography |
| Immunogen | A synthesized peptide derived from human PMF1 |
| Description | Part of the MIS12 complex which is required for normal chromosome alignment and segregation and kinetochore formation during mitosis. May act as a cotranscription partner of NFE2L2 involved in regulation of polyamine-induced transcription of SSAT. |
| Storage Condition and Buffer | Rabbit IgG in phosphate buffered saline , pH 7.4, 150mM NaCl, 0.02% sodium azide and 50% glycerol. Store at +4°C short term. Store at -20°C long term. Avoid freeze / thaw cycle. |

Protein Information

| | |
|--------------------------|---------------------------------------------------------------------------------------------------------------------------------------------------------------------------------------------------------------------------------------------------------|
| Name | PMF1 {ECO:0000312 EMBL:AAH65031.1} |
| Function | Part of the MIS12 complex which is required for normal chromosome alignment and segregation and kinetochore formation during mitosis. May act as a cotranscription partner of NFE2L2 involved in regulation of polyamine-induced transcription of SSAT. |
| Cellular Location | Nucleus. Chromosome, centromere, kinetochore Note=Associated with the kinetochore |
| Tissue Location | Highest levels of expression in heart and skeletal muscle, with significant levels expressed in kidney and liver |

Images



Western blot analysis of PMF1 expression in (1) HeLa cell lysate; (2) RAW 264.7 cell lysate.

Please note: All products are 'FOR RESEARCH USE ONLY. NOT FOR USE IN DIAGNOSTIC OR THERAPEUTIC PROCEDURES'.