

NSDHL Antibody

Rabbit mAb

Catalog # AP93070

Product Information

Application	WB, IP
Primary Accession	Q15738
Reactivity	Rat, Human, Mouse
Clonality	Monoclonal
Other Names	NSDHL; SDR31E1; XAP104;
Isotype	Rabbit IgG
Host	Rabbit
Calculated MW	41900

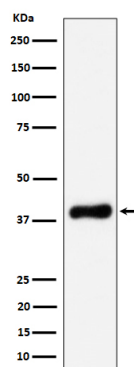
Additional Information

Dilution	WB 1:500~1:2000 IP 1:50
Purification	Affinity-chromatography
Immunogen	A synthesized peptide derived from human NSDHL
Description	Catalyzes the NAD(P) ⁺ -dependent oxidative decarboxylation of the C4 methyl groups of 4- α -carboxysterols in post-squalene cholesterol biosynthesis (By similarity).
Storage Condition and Buffer	Rabbit IgG in phosphate buffered saline , pH 7.4, 150mM NaCl, 0.02% sodium azide and 50% glycerol. Store at +4°C short term. Store at -20°C long term. Avoid freeze / thaw cycle.

Protein Information

Name	NSDHL
Synonyms	H105E3
Function	Catalyzes the NAD(P) ⁽⁺⁾ -dependent oxidative decarboxylation of the C4 methyl groups of 4- α -carboxysterols in post-squalene cholesterol biosynthesis (By similarity). Also plays a role in the regulation of the endocytic trafficking of EGFR (By similarity).
Cellular Location	Endoplasmic reticulum membrane; Single-pass membrane protein. Lipid droplet {ECO:0000250 UniProtKB:Q9R1J0} Note=Trafficking through the Golgi is necessary for ER membrane localization. {ECO:0000250 UniProtKB:Q9R1J0}
Tissue Location	Brain, heart, liver, lung, kidney, skin and placenta

Images



Western blot analysis of NSDHL expression in HeLa cell lysate.

Please note: All products are 'FOR RESEARCH USE ONLY. NOT FOR USE IN DIAGNOSTIC OR THERAPEUTIC PROCEDURES'.