

SLC25A12 Antibody

Rabbit mAb

Catalog # AP93071

Product Information

Application	WB, IP
Primary Accession	O75746
Reactivity	Rat, Human, Mouse
Clonality	Monoclonal
Other Names	AGC1; ARALAR; ARALAR1; SLC25A12;
Isotype	Rabbit IgG
Host	Rabbit
Calculated MW	74762

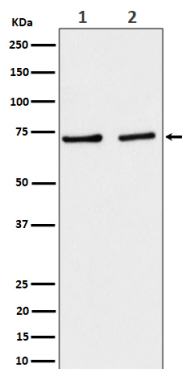
Additional Information

Dilution	WB 1:500~1:2000 IP 1:50
Purification	Affinity-chromatography
Immunogen	A synthesized peptide derived from human SLC25A12
Description	Calcium-dependent mitochondrial aspartate and glutamate carrier. May have a function in the urea cycle.
Storage Condition and Buffer	Rabbit IgG in phosphate buffered saline , pH 7.4, 150mM NaCl, 0.02% sodium azide and 50% glycerol. Store at +4°C short term. Store at -20°C long term. Avoid freeze / thaw cycle.

Protein Information

Name	SLC25A12 (HGNC:10982)
Function	Mitochondrial electrogenic aspartate/glutamate antiporter that favors efflux of aspartate and entry of glutamate and proton within the mitochondria as part of the malate-aspartate shuttle (PubMed: 11566871 , PubMed: 19641205 , PubMed: 24515575 , PubMed: 38945283). Also mediates the uptake of L-cysteinesulfinat (3-sulfin-L-alanine) by mitochondria in exchange of L-glutamate and proton (PubMed: 11566871). Can also exchange L-cysteinesulfinat with aspartate in their anionic form without any proton translocation (PubMed: 11566871). Lacks transport activity towards L-glutamine or gamma-aminobutyric acid (GABA) (PubMed: 38945283).
Cellular Location	Mitochondrion inner membrane; Multi-pass membrane protein
Tissue Location	Expressed predominantly in the heart and skeletal muscle, weakly in brain and kidney.

Images



Western blot analysis of SLC25A12 expression in (1) A431 cell lysate; (2) NIH/3T3 cell lysate.

Please note: All products are 'FOR RESEARCH USE ONLY. NOT FOR USE IN DIAGNOSTIC OR THERAPEUTIC PROCEDURES'.