

# Serine racemase Antibody

Rabbit mAb

Catalog # AP93077

## Product Information

<b>Application</b>	WB
<b>Primary Accession</b>	<a href="#">Q9GZT4</a>
<b>Reactivity</b>	Human
<b>Clonality</b>	Monoclonal
<b>Other Names</b>	D serine ammonia lyase; ILV1; ISO1; L serine ammonia lyase;
<b>Isotype</b>	Rabbit IgG
<b>Host</b>	Rabbit
<b>Calculated MW</b>	36566

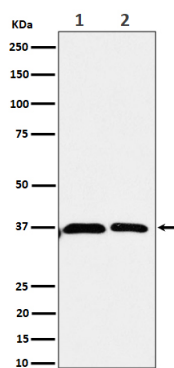
## Additional Information

<b>Dilution</b>	WB 1:500~1:2000
<b>Purification</b>	Affinity-chromatography
<b>Immunogen</b>	A synthesized peptide derived from human Serine racemase
<b>Description</b>	Catalyzes the synthesis of D-serine from L-serine. D-serine is a key coagonist with glutamate at NMDA receptors. Has dehydratase activity towards both L-serine and D-serine.
<b>Storage Condition and Buffer</b>	Rabbit IgG in phosphate buffered saline , pH 7.4, 150mM NaCl, 0.02% sodium azide and 50% glycerol. Store at +4°C short term. Store at -20°C long term. Avoid freeze / thaw cycle.

## Protein Information

<b>Name</b>	SRR
<b>Function</b>	Catalyzes the synthesis of D-serine from L-serine (PubMed: <a href="#">20106978</a> , PubMed: <a href="#">23391306</a> , PubMed: <a href="#">29277459</a> ). D-serine is a key coagonist with glutamate at NMDA receptors. Has dehydratase activity towards both L-serine and D-serine (By similarity).
<b>Tissue Location</b>	Expressed in the cerebellum, hippocampus, dorsolateral prefrontal cortex, and in motor neurons and glial cells of the lumbar spinal cord (at protein level) (PubMed:17880399, PubMed:24138986). Increased in the dorsolateral prefrontal cortex of schizophrenic patients (at protein level) (PubMed:17880399). Brain: expressed at high levels in hippocampus and corpus callosum, intermediate levels in substantia nigra and caudate, and low levels in amygdala, thalamus, and subthalamic nuclei (PubMed:15193426). Expressed in heart, skeletal muscle, kidney, and liver (PubMed:15193426)

## Images



Western blot analysis of Serine racemase expression in (1) 293 cell lysate; (2) U-87 MG cell lysate.

Please note: All products are 'FOR RESEARCH USE ONLY. NOT FOR USE IN DIAGNOSTIC OR THERAPEUTIC PROCEDURES'.