

PREPL Antibody

Rabbit mAb

Catalog # AP93083

Product Information

Application	WB, IHC, IF, ICC, IP, IHF
Primary Accession	Q4J6C6
Reactivity	Rat, Human, Mouse
Clonality	Monoclonal
Other Names	prepl; Prolyl endopeptidase-like;
Isotype	Rabbit IgG
Host	Rabbit
Calculated MW	83927

Additional Information

Dilution	WB 1:500~1:2000 IHC 1:50~1:200 ICC/IF 1:50~1:200 IP 1:50
Purification	Affinity-chromatography
Immunogen	A synthesized peptide derived from human PREPL
Description	Probable serine peptidase whose precise substrate specificity remains unclear. Does not cleave peptides after a arginine or lysine residue.
Storage Condition and Buffer	Rabbit IgG in phosphate buffered saline , pH 7.4, 150mM NaCl, 0.02% sodium azide and 50% glycerol. Store at +4°C short term. Store at -20°C long term. Avoid freeze / thaw cycle.

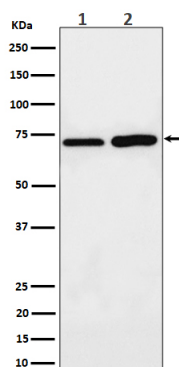
Protein Information

Name	PREPL
Synonyms	KIAA0436
Function	Serine peptidase whose precise substrate specificity remains unclear (PubMed: 16143824 , PubMed: 16385448 , PubMed: 28726805). Does not cleave peptides after a arginine or lysine residue (PubMed: 16143824). Regulates trans-Golgi network morphology and sorting by regulating the membrane binding of the AP-1 complex (PubMed: 23321636). May play a role in the regulation of synaptic vesicle exocytosis (PubMed: 24610330).
Cellular Location	Cytoplasm, cytosol. Golgi apparatus, trans-Golgi network {ECO:0000250 UniProtKB:Q8C167}. Cytoplasm, cytoskeleton {ECO:0000250 UniProtKB:Q8C167}. Golgi apparatus {ECO:0000250 UniProtKB:Q8C167}. Nucleus Note=Co-localizes with AP-1 in the trans-Golgi network (By similarity) Co-localizes with MAP2 and ACTB on the cytoskeleton (By similarity) Co-localizes with STX6 and GOSR2 at the Golgi apparatus (By similarity). {ECO:0000250 UniProtKB:Q8C167}

Tissue Location

Expressed in pyramidal neurons of the temporal cortex and neocortex (at protein level) (PubMed:23485813). Widely expressed (PubMed:15913950, PubMed:16385448). Expressed at higher level in brain, skeletal muscle, heart and kidney (PubMed:15913950, PubMed:16385448). Expressed at the endplates in the neuromuscular junction (PubMed:24610330).

Images



Western blot analysis of PREPL expression in (1) MCF7 cell lysate; (2) C6 cell lysate.

Please note: All products are 'FOR RESEARCH USE ONLY. NOT FOR USE IN DIAGNOSTIC OR THERAPEUTIC PROCEDURES'.