

TCTEX1 Antibody

Rabbit mAb

Catalog # AP93088

Product Information

| | |
|--------------------------|-------------------------------|
| Application | WB, IHC, IF, ICC, IP, IHF |
| Primary Accession | P63172 |
| Reactivity | Human, Mouse |
| Clonality | Monoclonal |
| Other Names | AGS2; DYNLT1; TCTEL1; Tctex1; |
| Isotype | Rabbit IgG |
| Host | Rabbit |
| Calculated MW | 12452 |

Additional Information

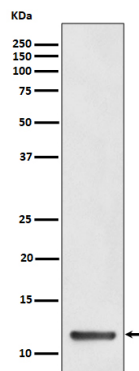
| | |
|-------------------------------------|--|
| Dilution | WB 1:500~1:2000 IHC 1:50~1:200 ICC/IF 1:50~1:200 IP 1:50 |
| Purification | Affinity-chromatography |
| Immunogen | A synthesized peptide derived from human TCTEX1 |
| Description | Acts as one of several non-catalytic accessory components of the cytoplasmic dynein 1 complex that are thought to be involved in linking dynein to cargos and to adapter proteins that regulate dynein function. |
| Storage Condition and Buffer | Rabbit IgG in phosphate buffered saline , pH 7.4, 150mM NaCl, 0.02% sodium azide and 50% glycerol. Store at +4°C short term. Store at -20°C long term. Avoid freeze / thaw cycle. |

Protein Information

| | |
|--------------------------|--|
| Name | DYNLT1 |
| Synonyms | TCTEL1, TCTEX-1, TCTEX1 |
| Function | Acts as one of several non-catalytic accessory components of the cytoplasmic dynein 1 complex that are thought to be involved in linking dynein to cargos and to adapter proteins that regulate dynein function. Cytoplasmic dynein 1 acts as a motor for the intracellular retrograde motility of vesicles and organelles along microtubules. Binds to transport cargos and is involved in apical cargo transport such as rhodopsin-bearing vesicles in polarized epithelia. May also be a accessory component of axonemal dynein. (Microbial infection) Is involved in intracellular targeting of D-type retrovirus gag polyproteins to the cytoplasmic assembly site. |
| Cellular Location | Golgi apparatus. Cytoplasm. Cytoplasm, cytoskeleton, spindle Note=Localizes to mitotic spindles. |
| Tissue Location | Expressed in heart, placenta, skeletal muscle kidney, pancreas, spleen, |

prostate, testis, ovary, ileum and colon Expressed in lung endothelial and smooth muscle cells (at protein level).

Images



Western blot analysis of TCTEX1 expression in HeLa cell lysate.

Please note: All products are 'FOR RESEARCH USE ONLY. NOT FOR USE IN DIAGNOSTIC OR THERAPEUTIC PROCEDURES'.