

CD275 Antibody

Rabbit mAb

Catalog # AP93107

Product Information

Application	WB
Primary Accession	O75144
Reactivity	Human
Clonality	Monoclonal
Other Names	B7H2; B7RP1; CD275; GL50; ICOSL; Icoslg; LICOS;
Isotype	Rabbit IgG
Host	Rabbit
Calculated MW	33349

Additional Information

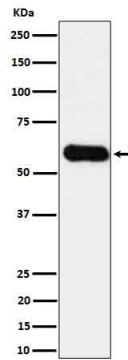
Dilution	WB 1:500~1:2000
Purification	Affinity-chromatography
Immunogen	A synthesized peptide derived from human CD275
Description	Ligand for the T-cell-specific cell surface receptor ICOS. Acts as a costimulatory signal for T-cell proliferation and cytokine secretion; induces also B-cell proliferation and differentiation into plasma cells.
Storage Condition and Buffer	Rabbit IgG in phosphate buffered saline , pH 7.4, 150mM NaCl, 0.02% sodium azide and 50% glycerol. Store at +4°C short term. Store at -20°C long term. Avoid freeze / thaw cycle.

Protein Information

Name	ICOSLG
Function	Ligand for the T-cell-specific cell surface receptor ICOS. Acts as a costimulatory signal for T-cell proliferation and cytokine secretion (PubMed: 11007762 , PubMed: 11023515 , PubMed: 30498080). Also induces B-cell proliferation and differentiation into plasma cells. Could play an important role in mediating local tissue responses to inflammatory conditions, as well as in modulating the secondary immune response by co-stimulating memory T-cell function (By similarity). In endothelial cells, required for proper neutrophil transmigration in response to chemoattractants, such as CXCL8/IL8 or N-formyl-methionyl peptides (fMLP) (PubMed: 30498080).
Cellular Location	Cell membrane; Single-pass type I membrane protein
Tissue Location	Expressed on peripheral blood B-cells and monocytes, as well as on monocyte-derived dendritic cells (at protein level). [Isoform 2]: Detected only in lymph nodes, leukocytes and spleen. Expressed on activated monocytes

and dendritic cells.

Images



Western blot analysis of CD275 in HUVEC cell lysate.

Please note: All products are 'FOR RESEARCH USE ONLY. NOT FOR USE IN DIAGNOSTIC OR THERAPEUTIC PROCEDURES'.