

Ube1L / UBA7 Antibody

Rabbit mAb

Catalog # AP93112

Product Information

Application	WB, IHC, FC
Primary Accession	P41226
Reactivity	Rat, Human, Mouse
Clonality	Monoclonal
Other Names	UBA1B; UBA7; UBE1L; UBE2; Ubiquitin activating enzyme 2; Ubiquitin-activating enzyme 7; Ubiquitin-activating enzyme E1 homolog;
Isotype	Rabbit IgG
Host	Rabbit
Calculated MW	111694

Additional Information

Dilution	WB 1:500~1:2000 IHC 1:50~1:200 FC 1:50
Purification	Affinity-chromatography
Immunogen	A synthesized peptide derived from human Ube1L / UBA7
Description	Activates ubiquitin by first adenylating with ATP its C-terminal glycine residue and thereafter linking this residue to the side chain of a cysteine residue in E1, yielding an ubiquitin-E1 thioester and free AMP.
Storage Condition and Buffer	Rabbit IgG in phosphate buffered saline , pH 7.4, 150mM NaCl, 0.02% sodium azide and 50% glycerol. Store at +4°C short term. Store at -20°C long term. Avoid freeze / thaw cycle.

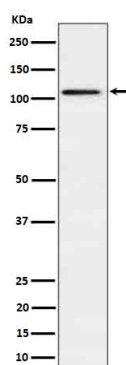
Protein Information

Name	UBA7 {ECO:0000303 PubMed:28397838, ECO:0000312 HGNC:HGNC:12471}
Function	E1-activating enzyme that catalyzes the covalent conjugation of the ubiquitin-like protein product of ISG15 to additional interferon stimulated proteins (ISGs) as well as other cellular proteins such as P53 in a process termed protein ISGylation (PubMed: 27545325). Plays an essential role in antiviral immunity together with ISG15 by restricting the replication of many viruses including rabies virus, influenza virus, sindbis virus, rotavirus or human cytomegalovirus (PubMed: 16254333 , PubMed: 19073728 , PubMed: 29056542 , PubMed: 29743376 , PubMed: 37722521). For example, ISG15 modification of influenza A protein NS1 disrupts the association of the NS1 with importin-alpha leading to NS1 nuclear import inhibition (PubMed: 20133869). ISGylation of human cytomegalovirus protein UL26 regulates its stability and inhibits its activities to suppress NF-kappa-B signaling (PubMed: 27564865).
Cellular Location	Cytoplasm. Nucleus

Tissue Location

Expressed in a variety of normal and tumor cell types, but is reduced in lung cancer cell lines

Images



Western blot analysis of Ube1L / UBA7 in HepG2 cell lysate.

Please note: All products are 'FOR RESEARCH USE ONLY. NOT FOR USE IN DIAGNOSTIC OR THERAPEUTIC PROCEDURES'.