

# CD116 Antibody

Rabbit mAb

Catalog # AP93116

## Product Information

---

<b>Application</b>	WB
<b>Primary Accession</b>	<a href="#">P15509</a>
<b>Reactivity</b>	Human
<b>Clonality</b>	Monoclonal
<b>Other Names</b>	CD116; CDw116; CSF2R; CSF2RA; CSF2RAX; CSF2RAY; CSF2RX; CSF2RY; SMDP4;
<b>Isotype</b>	Rabbit IgG
<b>Host</b>	Rabbit
<b>Calculated MW</b>	46207

## Additional Information

---

<b>Dilution</b>	WB 1:500~1:2000
<b>Purification</b>	Affinity-chromatography
<b>Immunogen</b>	A synthesized peptide derived from human CD116
<b>Description</b>	Low affinity receptor for granulocyte-macrophage colony-stimulating factor. Transduces a signal that results in the proliferation, differentiation, and functional activation of hematopoietic cells.
<b>Storage Condition and Buffer</b>	Rabbit IgG in phosphate buffered saline , pH 7.4, 150mM NaCl, 0.02% sodium azide and 50% glycerol. Store at +4°C short term. Store at -20°C long term. Avoid freeze / thaw cycle.

## Protein Information

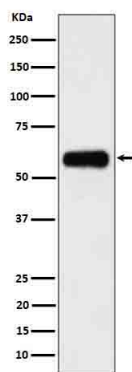
---

<b>Name</b>	CSF2RA
<b>Synonyms</b>	CSF2R, CSF2RY
<b>Function</b>	Low affinity receptor for granulocyte-macrophage colony- stimulating factor. Transduces a signal that results in the proliferation, differentiation, and functional activation of hematopoietic cells.
<b>Cellular Location</b>	Cell membrane; Single-pass type I membrane protein [Isoform 4]: Secreted.

## Images

---

Western blot analysis of CD116 in 293 cell lysate.



Please note: All products are 'FOR RESEARCH USE ONLY. NOT FOR USE IN DIAGNOSTIC OR THERAPEUTIC PROCEDURES'.