

IL12B Antibody

Rabbit mAb

Catalog # AP93117

Product Information

Application	WB, IF, FC, ICC
Primary Accession	P29460
Reactivity	Rat, Human, Mouse
Clonality	Monoclonal
Other Names	CLMF; CLMF p40; CLMF2; IL12 p40; IL12B; IMD28; IMD29; NKSF; NKSF2;
Isotype	Rabbit IgG
Host	Rabbit
Calculated MW	37169

Additional Information

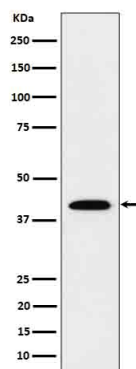
Dilution	WB 1:500~1:2000 ICC/IF 1:50~1:200 FC 1:50
Purification	Affinity-chromatography
Immunogen	A synthesized peptide derived from human IL12B
Description	Cytokine that can act as a growth factor for activated T and NK cells, enhance the lytic activity of NK/lymphokine-activated killer cells, and stimulate the production of IFN-gamma by resting PBMC.
Storage Condition and Buffer	Rabbit IgG in phosphate buffered saline , pH 7.4, 150mM NaCl, 0.02% sodium azide and 50% glycerol. Store at +4°C short term. Store at -20°C long term. Avoid freeze / thaw cycle.

Protein Information

Name	IL12B
Synonyms	NKSF2
Function	Cytokine that can act as a growth factor for activated T and NK cells, enhance the lytic activity of NK/lymphokine-activated killer cells, and stimulate the production of IFN-gamma by resting PBMC.
Cellular Location	Secreted.

Images

Western blot analysis of IL12B in Recombinant Human IL12B protein cell lysate.



Please note: All products are 'FOR RESEARCH USE ONLY. NOT FOR USE IN DIAGNOSTIC OR THERAPEUTIC PROCEDURES'.