

Gamma glutamyl hydrolase Antibody

Rabbit mAb

Catalog # AP93121

Product Information

Application	WB
Primary Accession	Q92820
Reactivity	Human
Clonality	Monoclonal
Other Names	folypolygammaglutamyl hydrolase; gamma glutamyl hydrolase; GGH;
Isotype	Rabbit IgG
Host	Rabbit
Calculated MW	35964

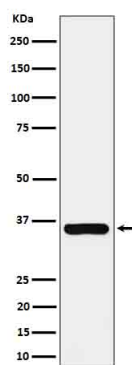
Additional Information

Dilution	WB 1:500~1:2000
Purification	Affinity-chromatography
Immunogen	A synthesized peptide derived from human Gamma glutamyl hydrolase
Description	Hydrolyzes the polyglutamate sidechains of pteroylpolyglutamates. Progressively removes gamma-glutamyl residues from pteroylpoly-gamma-glutamate to yield pteroyl-alpha-glutamate (folic acid) and free glutamate. May play an important role in the bioavailability of dietary pteroylpolyglutamates and in the metabolism of pteroylpolyglutamates and antifolates.
Storage Condition and Buffer	Rabbit IgG in phosphate buffered saline , pH 7.4, 150mM NaCl, 0.02% sodium azide and 50% glycerol. Store at +4°C short term. Store at -20°C long term. Avoid freeze / thaw cycle.

Protein Information

Name	GGH (HGNC:4248)
Function	Hydrolyzes the polyglutamate sidechains of pteroylpolyglutamates. Progressively removes gamma-glutamyl residues from pteroylpoly-gamma-glutamate to yield pteroyl-alpha-glutamate (folic acid) and free glutamate (PubMed: 11005824 , PubMed: 8816764). May play an important role in the bioavailability of dietary pteroylpolyglutamates and in the metabolism of pteroylpolyglutamates and antifolates.
Cellular Location	Secreted, extracellular space. Lysosome. Melanosome. Note=While its intracellular location is primarily the lysosome, most of the enzyme activity is secreted Identified by mass spectrometry in melanosome fractions from stage I to stage IV.

Images



Western blot analysis of Gamma glutamyl hydrolase expression in MCF7 cell lysate.

Please note: All products are 'FOR RESEARCH USE ONLY. NOT FOR USE IN DIAGNOSTIC OR THERAPEUTIC PROCEDURES'.