

# Dopamine beta Hydroxylase Antibody

Rabbit mAb

Catalog # AP93122

## Product Information

---

<b>Application</b>	WB, IHC
<b>Primary Accession</b>	<a href="#">P09172</a>
<b>Reactivity</b>	Human
<b>Clonality</b>	Monoclonal
<b>Other Names</b>	dbh; DBM; Dopamine beta hydroxylase; Dopamine beta monooxygenase; Soluble dopamine beta-hydroxylase;
<b>Isotype</b>	Rabbit IgG
<b>Host</b>	Rabbit
<b>Calculated MW</b>	69065

## Additional Information

---

<b>Dilution</b>	WB 1:500~1:2000 IHC 1:50~1:100
<b>Purification</b>	Affinity-chromatography
<b>Immunogen</b>	A synthesized peptide derived from human Dopamine beta Hydroxylase
<b>Description</b>	Conversion of dopamine to noradrenaline.
<b>Storage Condition and Buffer</b>	Rabbit IgG in phosphate buffered saline , pH 7.4, 150mM NaCl, 0.02% sodium azide and 50% glycerol. Store at +4°C short term. Store at -20°C long term. Avoid freeze / thaw cycle.

## Protein Information

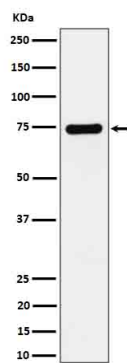
---

<b>Name</b>	DBH
<b>Function</b>	Catalyzes the hydroxylation of dopamine to noradrenaline (also known as norepinephrine), and is thus vital for regulation of these neurotransmitters.
<b>Cellular Location</b>	[Soluble dopamine beta-hydroxylase]: Cytoplasmic vesicle, secretory vesicle lumen Cytoplasmic vesicle, secretory vesicle, chromaffin granule lumen. Secreted

## Images

---

Western blot analysis of Dopamine beta Hydroxylase expression in SH-SY5Y cell lysate.



Please note: All products are 'FOR RESEARCH USE ONLY. NOT FOR USE IN DIAGNOSTIC OR THERAPEUTIC PROCEDURES'.