

GAS2 Antibody

Rabbit mAb

Catalog # AP93127

Product Information

Application	WB, IHC
Primary Accession	O43903
Reactivity	Human
Clonality	Monoclonal
Other Names	Gas2; Growth arrest specific 2;
Isotype	Rabbit IgG
Host	Rabbit
Calculated MW	34945

Additional Information

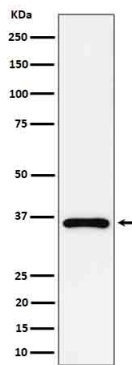
Dilution	WB 1:500~1:2000 IHC 1:50~1:100
Purification	Affinity-chromatography
Immunogen	A synthesized peptide derived from human GAS2
Description	May play a role in apoptosis by acting as a cell death substrate for caspases. Is cleaved during apoptosis and the cleaved form induces dramatic rearrangements of the actin cytoskeleton and potent changes in the shape of the affected cells. May be involved in the membrane ruffling process.
Storage Condition and Buffer	Rabbit IgG in phosphate buffered saline , pH 7.4, 150mM NaCl, 0.02% sodium azide and 50% glycerol. Store at +4°C short term. Store at -20°C long term. Avoid freeze / thaw cycle.

Protein Information

Name	GAS2
Function	Required to maintain microtubule bundles in inner ear supporting cells, affording them with mechanical stiffness to transmit sound energy through the cochlea.
Cellular Location	Cytoplasm, cytoskeleton, stress fiber. Membrane {ECO:0000250 UniProtKB:P11862}; Peripheral membrane protein {ECO:0000250 UniProtKB:P11862} Note=Component of the microfilament system. Colocalizes with actin fibers at the cell border and along the stress fibers in growth- arrested fibroblasts. Mainly membrane-associated. When hyperphosphorylated, accumulates at membrane ruffles (By similarity) Colocalizes with detyrosinated alpha-tubulin along the length of microtubule bundles in inner and outer pillar cells (By similarity) {ECO:0000250 UniProtKB:P11862}
Tissue Location	Ubiquitously expressed with highest levels in liver, lung, and kidney. Not

found in spleen

Images



Western blot analysis of GAS2 expression in Jurkat cell lysate.

Please note: All products are 'FOR RESEARCH USE ONLY. NOT FOR USE IN DIAGNOSTIC OR THERAPEUTIC PROCEDURES'.