

# HN1 Antibody

Rabbit mAb

Catalog # AP93131

## Product Information

---

**Application** WB, FC  
**Primary Accession** [Q9UK76](#)  
**Reactivity** Rat, Human, Mouse  
**Clonality** Monoclonal  
**Other Names** ARM2; HN1; HN1A;

**Isotype** Rabbit IgG  
**Host** Rabbit  
**Calculated MW** 16015

## Additional Information

---

**Dilution** WB 1:500~1:2000 FC 1:50  
**Purification** Affinity-chromatography  
**Immunogen** A synthesized peptide derived from human HN1  
**Description** Modulates negatively AKT-mediated GSK3B signaling (PubMed:21323578, PubMed:22155408).  
**Storage Condition and Buffer** Rabbit IgG in phosphate buffered saline , pH 7.4, 150mM NaCl, 0.02% sodium azide and 50% glycerol. Store at +4°C short term. Store at -20°C long term. Avoid freeze / thaw cycle.

## Protein Information

---

**Name** JPT1 ( [HGNC:14569](#))

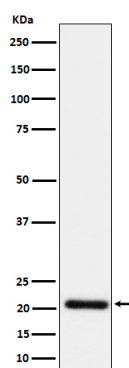
**Function** Modulates negatively AKT-mediated GSK3B signaling (PubMed: [21323578](#), PubMed:[22155408](#)). Induces CTNNB1 'Ser-33' phosphorylation and degradation through the suppression of the inhibitory 'Ser-9' phosphorylation of GSK3B, which represses the function of the APC:CTNNB1:GSK3B complex and the interaction with CDH1/E-cadherin in adherent junctions (PubMed:[25169422](#)). Plays a role in the regulation of cell cycle and cell adhesion (PubMed:[25169422](#), PubMed:[25450365](#)). Has an inhibitory role on AR-signaling pathway through the induction of receptor proteasomal degradation (PubMed:[22155408](#)).

**Cellular Location** Nucleus. Cytoplasm

**Tissue Location** Expressed in testis, skeletal muscle, thymus, prostate, colon, peripheral blood cells, brain and placenta

## Images

---



Western blot analysis of HN1 expression in HeLa cell lysate.

Please note: All products are 'FOR RESEARCH USE ONLY. NOT FOR USE IN DIAGNOSTIC OR THERAPEUTIC PROCEDURES'.