

SEC14L2 / TAP Antibody

Rabbit mAb

Catalog # AP93136

Product Information

Application	WB, IHC
Primary Accession	O76054
Reactivity	Rat, Human, Mouse
Clonality	Monoclonal
Other Names	hTAP; SEC14 like 2; Sec14l2; SPF; Squalene transfer protein; TAP; TAP1;
Isotype	Rabbit IgG
Host	Rabbit
Calculated MW	46145

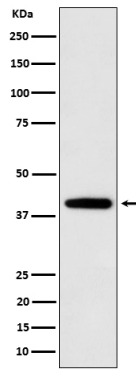
Additional Information

Dilution	WB 1:500~1:2000 IHC 1:50~1:200
Purification	Affinity-chromatography
Immunogen	A synthesized peptide derived from human SEC14L2 / TAP
Description	Carrier protein. Binds to some hydrophobic molecules and promotes their transfer between the different cellular sites. Binds with high affinity to alpha-tocopherol.
Storage Condition and Buffer	Rabbit IgG in phosphate buffered saline , pH 7.4, 150mM NaCl, 0.02% sodium azide and 50% glycerol. Store at +4°C short term. Store at -20°C long term. Avoid freeze / thaw cycle.

Protein Information

Name	SEC14L2
Synonyms	C22orf6, KIAA1186, KIAA1658
Function	Carrier protein. Binds to some hydrophobic molecules and promotes their transfer between the different cellular sites. Binds with high affinity to alpha-tocopherol. Also binds with a weaker affinity to other tocopherols and to tocotrienols. May have a transcriptional activatory activity via its association with alpha- tocopherol. Probably recognizes and binds some squalene structure, suggesting that it may regulate cholesterol biosynthesis by increasing the transfer of squalene to a metabolic active pool in the cell.
Cellular Location	Cytoplasm. Nucleus. Note=Cytoplasmic in absence of alpha-tocopherol, and nuclear in presence of alpha-tocopherol
Tissue Location	Widely expressed. Strong expression in liver, brain and prostate.

Images



Western blot analysis of SEC14L2 / TAP expression in U87-MG cell lysate.

Please note: All products are 'FOR RESEARCH USE ONLY. NOT FOR USE IN DIAGNOSTIC OR THERAPEUTIC PROCEDURES'.