

EXOC2 Antibody

Rabbit mAb

Catalog # AP93153

Product Information

Application	WB
Primary Accession	Q96KP1
Reactivity	Rat, Human, Mouse
Clonality	Monoclonal
Other Names	EXOC2; SEC5; SEC5L1; Sec5p;
Isotype	Rabbit IgG
Host	Rabbit
Calculated MW	104066

Additional Information

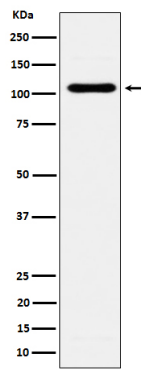
Dilution	WB 1:500~1:2000
Purification	Affinity-chromatography
Immunogen	A synthesized peptide derived from human EXOC2
Description	Component of the exocyst complex involved in the docking of exocytic vesicles with fusion sites on the plasma membrane.
Storage Condition and Buffer	Rabbit IgG in phosphate buffered saline , pH 7.4, 150mM NaCl, 0.02% sodium azide and 50% glycerol. Store at +4°C short term. Store at -20°C long term. Avoid freeze / thaw cycle.

Protein Information

Name	EXOC2
Synonyms	SEC5, SEC5L1
Function	Component of the exocyst complex involved in the docking of exocytic vesicles with fusion sites on the plasma membrane.
Cellular Location	Midbody, Midbody ring Note=Recruitment to the midbody does not require RALA, nor RALB (PubMed:18756269). Colocalizes with CNTRL/centriolin at the midbody ring (PubMed:16213214).
Tissue Location	Widely expressed with highest levels in brain and placenta.

Images

Western blot analysis of EXOC2 expression in BxPC-3 cell lysate.



Please note: All products are 'FOR RESEARCH USE ONLY. NOT FOR USE IN DIAGNOSTIC OR THERAPEUTIC PROCEDURES'.