

RAB22A Antibody

Rabbit mAb

Catalog # AP93155

Product Information

Application	WB, IF, ICC, IP
Primary Accession	Q9UL26
Reactivity	Rat, Human, Mouse
Clonality	Monoclonal
Other Names	Rab22; RAB22A;
Isotype	Rabbit IgG
Host	Rabbit
Calculated MW	21855

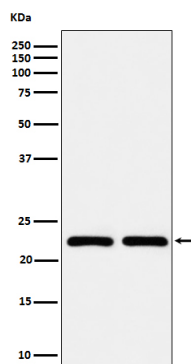
Additional Information

Dilution	WB 1:500~1:2000 ICC/IF 1:50~1:200 IP 1:50
Purification	Affinity-chromatography
Immunogen	A synthesized peptide derived from human RAB22A
Description	Plays a role in endocytosis and intracellular protein transport. Mediates trafficking of TF from early endosomes to recycling endosomes (PubMed: 16537905).
Storage Condition and Buffer	Rabbit IgG in phosphate buffered saline , pH 7.4, 150mM NaCl, 0.02% sodium azide and 50% glycerol. Store at +4°C short term. Store at -20°C long term. Avoid freeze / thaw cycle.

Protein Information

Name	RAB22A
Synonyms	RAB22
Function	Plays a role in endocytosis and intracellular protein transport. Mediates trafficking of TF from early endosomes to recycling endosomes (PubMed: 16537905). Required for NGF-mediated endocytosis of NTRK1, and subsequent neurite outgrowth (PubMed: 21849477). Binds GTP and GDP and has low GTPase activity. Alternates between a GTP-bound active form and a GDP-bound inactive form (PubMed: 16537905).
Cellular Location	Endosome membrane {ECO:0000250 UniProtKB:P51154}; Lipid-anchor. Cell membrane {ECO:0000250 UniProtKB:P51154}; Lipid-anchor. Early endosome. Late endosome {ECO:0000250 UniProtKB:P51154}. Cell projection, ruffle. Cytoplasmic vesicle. Cytoplasmic vesicle, phagosome. Cytoplasmic vesicle, phagosome membrane; Lipid-anchor; Cytoplasmic side. Note=Recruited to phagosomes containing S.aureus or M.tuberculosis.

Images



Western blot analysis of RAB22A expression in (1) MCF-7 cell lysate; (2) BxPC-3 cell lysate.

Please note: All products are 'FOR RESEARCH USE ONLY. NOT FOR USE IN DIAGNOSTIC OR THERAPEUTIC PROCEDURES'.