

TFIIE alpha Antibody

Rabbit mAb

Catalog # AP93157

Product Information

Application	WB, IHC
Primary Accession	P29083
Reactivity	Rat, Human, Mouse
Clonality	Monoclonal
Other Names	Gtf2e1; TF2E1; TFIIE alpha;
Isotype	Rabbit IgG
Host	Rabbit
Calculated MW	49452

Additional Information

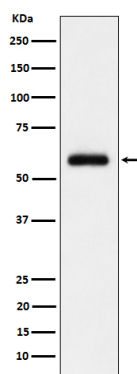
Dilution	WB 1:500~1:2000 IHC 1:50~1:200
Purification	Affinity-chromatography
Immunogen	A synthesized peptide derived from human TFIIE alpha
Description	Recruits TFIIH to the initiation complex and stimulates the RNA polymerase II C-terminal domain kinase and DNA-dependent ATPase activities of TFIIH. Both TFIIH and TFIIE are required for promoter clearance by RNA polymerase.
Storage Condition and Buffer	Rabbit IgG in phosphate buffered saline , pH 7.4, 150mM NaCl, 0.02% sodium azide and 50% glycerol. Store at +4°C short term. Store at -20°C long term. Avoid freeze / thaw cycle.

Protein Information

Name	GTF2E1
Synonyms	TF2E1
Function	Recruits TFIIH to the initiation complex and stimulates the RNA polymerase II C-terminal domain kinase and DNA-dependent ATPase activities of TFIIH. Both TFIIH and TFIIE are required for promoter clearance by RNA polymerase.
Cellular Location	Nucleus

Images

Western blot analysis of TFIIE alpha expression in HeLa cell lysate.



Please note: All products are 'FOR RESEARCH USE ONLY. NOT FOR USE IN DIAGNOSTIC OR THERAPEUTIC PROCEDURES'.