

SHB Antibody

Rabbit mAb

Catalog # AP93165

Product Information

Application	WB
Primary Accession	Q15464
Reactivity	Rat, Human, Mouse
Clonality	Monoclonal
Other Names	Shb;
Isotype	Rabbit IgG
Host	Rabbit
Calculated MW	55042

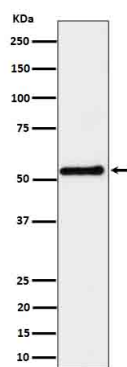
Additional Information

Dilution	WB 1:500~1:2000
Purification	Affinity-chromatography
Immunogen	A synthesized peptide derived from human SHB
Description	Adapter protein which regulates several signal transduction cascades by linking activated receptors to downstream signaling components. May play a role in angiogenesis by regulating FGFR1, VEGFR2 and PDGFR signaling.
Storage Condition and Buffer	Rabbit IgG in phosphate buffered saline , pH 7.4, 150mM NaCl, 0.02% sodium azide and 50% glycerol. Store at +4°C short term. Store at -20°C long term. Avoid freeze / thaw cycle.

Protein Information

Name	SHB
Function	Adapter protein which regulates several signal transduction cascades by linking activated receptors to downstream signaling components. May play a role in angiogenesis by regulating FGFR1, VEGFR2 and PDGFR signaling. May also play a role in T-cell antigen receptor/TCR signaling, interleukin-2 signaling, apoptosis and neuronal cells differentiation by mediating basic-FGF and NGF-induced signaling cascades. May also regulate IRS1 and IRS2 signaling in insulin- producing cells.
Cellular Location	Cytoplasm. Cell membrane; Peripheral membrane protein; Cytoplasmic side. Note=Associates with membrane lipid rafts upon TCR stimulation
Tissue Location	Widely expressed..

Images



Western blot analysis of SHB expression in K562 cell lysate.

Please note: All products are 'FOR RESEARCH USE ONLY. NOT FOR USE IN DIAGNOSTIC OR THERAPEUTIC PROCEDURES'.