

Ceruloplasmin Antibody

Rabbit mAb

Catalog # AP93166

Product Information

Application	WB
Primary Accession	P00450
Reactivity	Rat, Human
Clonality	Monoclonal
Other Names	Ceruloplasmin; CP2; Ferroxidase;
Isotype	Rabbit IgG
Host	Rabbit
Calculated MW	122219

Additional Information

Dilution	WB 1:500~1:2000
Purification	Affinity-chromatography
Immunogen	A synthesized peptide derived from human Ceruloplasmin
Description	Ceruloplasmin is a blue, copper-binding (6-7 atoms per molecule) glycoprotein. It has ferroxidase activity oxidizing Fe(2+) to Fe(3+) without releasing radical oxygen species. It is involved in iron transport across the cell membrane.
Storage Condition and Buffer	Rabbit IgG in phosphate buffered saline , pH 7.4, 150mM NaCl, 0.02% sodium azide and 50% glycerol. Store at +4°C short term. Store at -20°C long term. Avoid freeze / thaw cycle.

Protein Information

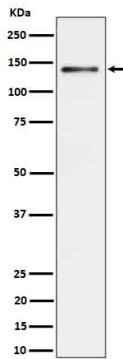
Name	CP (HGNC:2295)
Function	Multifunctional blue, copper-binding (6-7 atoms per molecule) glycoprotein. It has ferroxidase activity oxidizing Fe(2+) to Fe(3+) without releasing radical oxygen species. It is involved in iron transport across the cell membrane (PubMed: 16150804). Copper ions provide a large number of enzymatic activities. Oxidizes highly toxic ferrous ions to the ferric state for further incorporation onto apo- transferrins, catalyzes Cu(+) oxidation and promotes the oxidation of biogenic amines such as norepinephrin and serotonin (PubMed: 14623105 , PubMed: 4643313 , PubMed: 5912351). Provides Cu(2+) ions for the ascorbate-mediated deaminase degradation of the heparan sulfate chains of GPC1 (By similarity). Has glutathione peroxidase-like activity, can remove both hydrogen peroxide and lipid hydroperoxide in the presence of thiols (PubMed: 10481051). Also shows NO-oxidase and NO2 synthase activities that determine endocrine NO homeostasis (PubMed: 16906150).
Cellular Location	Secreted. Note=Colocalizes with GCP1 in secretory intracellular compartments

{ECO:0000250|UniProtKB:P13635}

Tissue Location

Expressed by the liver and secreted in plasma.

Images



Western blot analysis of Ceruloplasmin expression in Rat liver cell lysate.

Please note: All products are 'FOR RESEARCH USE ONLY. NOT FOR USE IN DIAGNOSTIC OR THERAPEUTIC PROCEDURES'.