

# PSIP1 / LEDGF Antibody

Rabbit mAb

Catalog # AP93170

## Product Information

---

<b>Application</b>	WB, IHC, IF, ICC, IHF
<b>Primary Accession</b>	<a href="#">O75475</a>
<b>Reactivity</b>	Human
<b>Clonality</b>	Monoclonal
<b>Other Names</b>	DFS70; LEDGF; p52; p75; PAIP; Psip1; PSIP2;
<b>Isotype</b>	Rabbit IgG
<b>Host</b>	Rabbit
<b>Calculated MW</b>	60103

## Additional Information

---

<b>Dilution</b>	WB 1:500~1:2000 IHC 1:50~1:200 ICC/IF 1:50~1:200
<b>Purification</b>	Affinity-chromatography
<b>Immunogen</b>	A synthesized peptide derived from human PSIP1 / LEDGF
<b>Description</b>	Transcriptional coactivator involved in neuroepithelial stem cell differentiation and neurogenesis. Involved in particular in lens epithelial cell gene regulation and stress responses.
<b>Storage Condition and Buffer</b>	Rabbit IgG in phosphate buffered saline , pH 7.4, 150mM NaCl, 0.02% sodium azide and 50% glycerol. Store at +4°C short term. Store at -20°C long term. Avoid freeze / thaw cycle.

## Protein Information

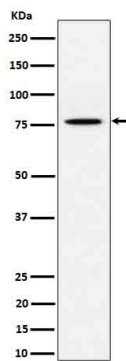
---

<b>Name</b>	PSIP1
<b>Synonyms</b>	DFS70, LEDGF, PSIP2
<b>Function</b>	Transcriptional coactivator involved in neuroepithelial stem cell differentiation and neurogenesis. Involved in particular in lens epithelial cell gene regulation and stress responses. May play an important role in lens epithelial to fiber cell terminal differentiation. May play a protective role during stress-induced apoptosis. Isoform 2 is a more general and stronger transcriptional coactivator. Isoform 2 may also act as an adapter to coordinate pre- mRNA splicing. Cellular cofactor for lentiviral integration.
<b>Cellular Location</b>	Nucleus. Note=Remains chromatin-associated throughout the cell cycle
<b>Tissue Location</b>	Widely expressed. Expressed at high level in the thymus. Expressed in fetal and adult brain. Expressed in neurons, but not astrocytes. Markedly elevated in fetal as compared to adult brain In the adult brain, expressed in the subventricular zone (SVZ), in hippocampus, and undetectable elsewhere. In

the fetal brain, expressed in the germinal neuroepithelium and cortical plate regions

## Images

---



Western blot analysis of PSIP1 / LEDGF expression in HeLa cell lysate.

Please note: All products are 'FOR RESEARCH USE ONLY. NOT FOR USE IN DIAGNOSTIC OR THERAPEUTIC PROCEDURES'.