

Fetuin B Antibody

Rabbit mAb

Catalog # AP93171

Product Information

Application	WB, IHC
Primary Accession	Q9UGM5
Reactivity	Rat, Human
Clonality	Monoclonal
Other Names	Fet; Fetub; Fetuin beta; Gugu; Pp63;
Isotype	Rabbit IgG
Host	Rabbit
Calculated MW	42055

Additional Information

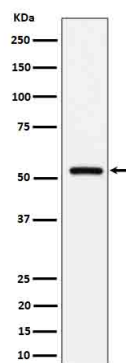
Dilution	WB 1:500~1:2000 IHC 1:50~1:200
Purification	Affinity-chromatography
Immunogen	A synthesized peptide derived from human Fetuin B
Description	Protease inhibitor required for egg fertilization. Required to prevent premature zona pellucida hardening before fertilization, probably by inhibiting the protease activity of ASTL, a protease that mediates the cleavage of ZP2 and triggers zona pellucida hardening (By similarity).
Storage Condition and Buffer	Rabbit IgG in phosphate buffered saline , pH 7.4, 150mM NaCl, 0.02% sodium azide and 50% glycerol. Store at +4°C short term. Store at -20°C long term. Avoid freeze / thaw cycle.

Protein Information

Name	FETUB
Function	Protease inhibitor required for egg fertilization. Required to prevent premature zona pellucida hardening before fertilization, probably by inhibiting the protease activity of ASTL, a protease that mediates the cleavage of ZP2 and triggers zona pellucida hardening (By similarity).
Cellular Location	Secreted.
Tissue Location	Liver and testis.

Images

Western blot analysis of Fetuin B expression in human serum cell lysate.



Please note: All products are 'FOR RESEARCH USE ONLY. NOT FOR USE IN DIAGNOSTIC OR THERAPEUTIC PROCEDURES'.