

CCL23 / MIP3 Antibody

Rabbit mAb

Catalog # AP93174

Product Information

Application	WB, IHC
Primary Accession	P55773
Reactivity	Human
Clonality	Monoclonal
Other Names	C C motif chemokine ligand 23; C-C motif chemokine 23; C6 beta chemokine; CCL23; CCL23(30-99); Chemokine (C C motif) ligand 23; Chemokine CC motif ligand 23; ck beta 8; CKB8; Hmrp-2a; Macrophage inflammatory protein 3; MIP3; MPIF1; Myeloid progenitor inhibitory factor 1; SCYA23; Small inducible cytokine A 23; Small inducible cytokine subfamily A, member 23; Small-inducible cytokine A23;
Isotype	Rabbit IgG
Host	Rabbit
Calculated MW	13443

Additional Information

Dilution	WB 1:500~1:2000 IHC 1:50~1:200
Purification	Affinity-chromatography
Immunogen	A synthesized peptide derived from human CCL23 / MIP3
Description	Shows chemotactic activity for monocytes, resting T-lymphocytes, and neutrophils, but not for activated lymphocytes. Inhibits proliferation of myeloid progenitor cells in colony formation assays. This protein can bind heparin. Binds CCR1. CCL23(19-99), CCL23(22-99), CCL23(27-99), CCL23(30-99) are more potent chemoattractants than the small-inducible cytokine A23.
Storage Condition and Buffer	Rabbit IgG in phosphate buffered saline , pH 7.4, 150mM NaCl, 0.02% sodium azide and 50% glycerol. Store at +4°C short term. Store at -20°C long term. Avoid freeze / thaw cycle.

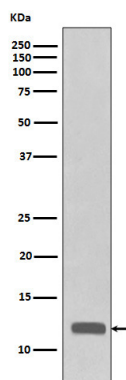
Protein Information

Name	CCL23
Synonyms	MIP3, MPIF1, SCYA23
Function	Shows chemotactic activity for monocytes, resting T- lymphocytes, and neutrophils, but not for activated lymphocytes. Inhibits proliferation of myeloid progenitor cells in colony formation assays. This protein can bind heparin. Binds CCR1. CCL23(19-99), CCL23(22-99), CCL23(27-99), CCL23(30-99) are more potent chemoattractants than CCL23.
Cellular Location	Secreted.

Tissue Location

High levels in adult lung, liver, skeletal muscle and pancreas. Moderate levels in fetal liver, adult bone marrow and placenta. The short form is the major species and the longer form was detected only in very low abundance. CCL23(19-99), CCL23(22-99), CCL23(27-99), CCL23(30-99) are found in high levels in synovial fluids from rheumatoid patients.

Images



Western blot analysis of CCL23 / MIP3 expression in recombinant protein cell lysate.

Please note: All products are 'FOR RESEARCH USE ONLY. NOT FOR USE IN DIAGNOSTIC OR THERAPEUTIC PROCEDURES'.