

Tripeptidyl peptidase II Antibody

Rabbit mAb

Catalog # AP93175

Product Information

Application	WB, IHC, IF, FC, ICC, IHF
Primary Accession	P29144
Reactivity	Rat, Human, Mouse
Clonality	Monoclonal
Other Names	TPP II; TPP2; Tripeptidyl aminopeptidase; Tripeptidyl peptidase 2; Tripeptidyl peptidase II;
Isotype	Rabbit IgG
Host	Rabbit
Calculated MW	138350

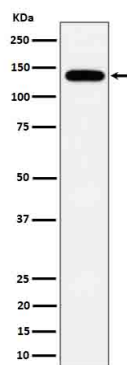
Additional Information

Dilution	WB 1:500~1:2000 IHC 1:50~1:200 ICC/IF 1:50~1:200 FC 1:50
Purification	Affinity-chromatography
Immunogen	A synthesized peptide derived from human Tripeptidyl peptidase II
Description	Tripeptidyl peptidase II is a component of the proteolytic cascade acting downstream of the 26S proteasome in the ubiquitin-proteasome pathway. It may be able to complement the 26S proteasome function to some extent under conditions in which the latter is inhibited.
Storage Condition and Buffer	Rabbit IgG in phosphate buffered saline , pH 7.4, 150mM NaCl, 0.02% sodium azide and 50% glycerol. Store at +4°C short term. Store at -20°C long term. Avoid freeze / thaw cycle.

Protein Information

Name	TPP2
Function	Cytosolic tripeptidyl-peptidase that releases N-terminal tripeptides from polypeptides and is a component of the proteolytic cascade acting downstream of the 26S proteasome in the ubiquitin- proteasome pathway (PubMed: 25525876 , PubMed: 30533531). It plays an important role in intracellular amino acid homeostasis (PubMed: 25525876). Stimulates adipogenesis (By similarity).
Cellular Location	Cytoplasm. Nucleus. Note=Translocates to the nucleus in response to gamma-irradiation

Images



Western blot analysis of Tripeptidyl peptidase II expression in HepG2 cell lysate.

Please note: All products are 'FOR RESEARCH USE ONLY. NOT FOR USE IN DIAGNOSTIC OR THERAPEUTIC PROCEDURES'.