

Phospho-Histone H3 (S10) Antibody

Rabbit mAb

Catalog # AP93186

Product Information

| | |
|--------------------------|-------------------------------------|
| Application | WB, IHC, IF, ICC, IP, IHF |
| Primary Accession | P68431 |
| Reactivity | Rat, Human, Mouse |
| Clonality | Monoclonal |
| Other Names | Histone H3.1, Histone H3, HIST1H3A; |
| Isotype | Rabbit IgG |
| Host | Rabbit |
| Calculated MW | 15404 |

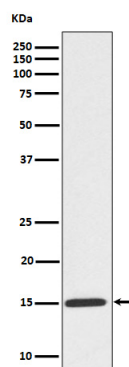
Additional Information

| | |
|-------------------------------------|--|
| Dilution | WB 1:100~1:200 IHC 1:500~1:2000 ICC/IF 1:1000~1:2000 |
| Purification | Affinity-chromatography |
| Immunogen | A synthesized peptide derived from human Phospho-Histone H3 (S10) |
| Description | Belongs to the histone H3 family. Play a central role in transcription regulation, DNA repair, DNA replication and chromosomal stability. DNA accessibility is regulated via a complex set of post-translational modifications of histones, also called histone code, and nucleosome remodeling. |
| Storage Condition and Buffer | Rabbit IgG in phosphate buffered saline , pH 7.4, 150mM NaCl, 0.02% sodium azide and 50% glycerol. Store at +4°C short term. Store at -20°C long term. Avoid freeze / thaw cycle. |

Protein Information

| | |
|--------------------------|--|
| Name | H3C1 (HGNC:4766) |
| Synonyms | H3FA, HIST1H3A |
| Function | Core component of nucleosome. Nucleosomes wrap and compact DNA into chromatin, limiting DNA accessibility to the cellular machineries which require DNA as a template. Histones thereby play a central role in transcription regulation, DNA repair, DNA replication and chromosomal stability. DNA accessibility is regulated via a complex set of post-translational modifications of histones, also called histone code, and nucleosome remodeling. |
| Cellular Location | Nucleus. Chromosome. |

Images



Western blot analysis of Phospho-Histone H3 (S10) expression in HeLa treated Colcemid cell lysate.

Please note: All products are 'FOR RESEARCH USE ONLY. NOT FOR USE IN DIAGNOSTIC OR THERAPEUTIC PROCEDURES'.