

DMC1 Antibody (N-term)

Affinity Purified Rabbit Polyclonal Antibody (Pab)

Catalog # AP9329a

Product Information

Application	WB, IHC-P, FC, E
Primary Accession	Q14565
Reactivity	Human
Host	Rabbit
Clonality	Polyclonal
Isotype	Rabbit IgG
Clone Names	RB23872
Calculated MW	37681
Antigen Region	1-30

Additional Information

Gene ID	11144
Other Names	Meiotic recombination protein DMC1/LIM15 homolog, DMC1, DMC1H, LIM15
Target/Specificity	This DMC1 antibody is generated from rabbits immunized with a KLH conjugated synthetic peptide between 1-30 amino acids from the N-terminal region of human DMC1.
Dilution	WB~~1:1000 IHC-P~~1:100~500 FC~~1:10~50 E~~Use at an assay dependent concentration.
Format	Purified polyclonal antibody supplied in PBS with 0.09% (W/V) sodium azide. This antibody is purified through a protein A column, followed by peptide affinity purification.
Storage	Maintain refrigerated at 2-8°C for up to 2 weeks. For long term storage store at -20°C in small aliquots to prevent freeze-thaw cycles.
Precautions	DMC1 Antibody (N-term) is for research use only and not for use in diagnostic or therapeutic procedures.

Protein Information

Name	DMC1
Synonyms	DMC1H, LIM15
Function	Participates in meiotic recombination, specifically in homologous strand assimilation, which is required for the resolution of meiotic double-strand

breaks.

Cellular Location

Nucleus. Chromosome {ECO:0000250|UniProtKB:Q61880}

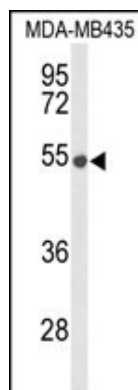
Background

DMC1 is essential for meiotic homologous recombination. Genetic recombination in meiosis plays an important role in generating diversity of genetic information. The product of this protein is structurally and evolutionary related to the products of the yeast RAD51 and E. coli RecA genes.

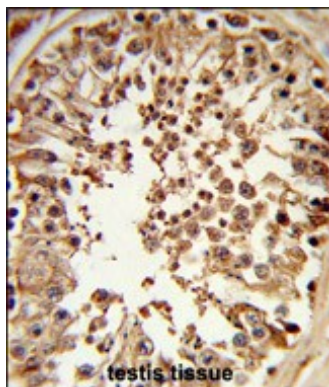
References

Volodin,A.A. J. Biol. Chem. 284 (3), 1495-1504 (2009)
Hikiba,J.FEBS J. 276 (2), 457-465 (2009)
Hikiba,J. Nucleic Acids Res. 36 (12), 4181-4190 (2008)

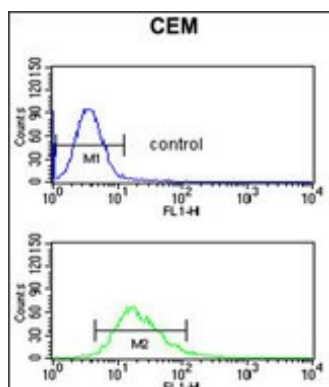
Images



Western blot analysis of DMC1 Antibody (N-term) (Cat. #AP9329a) in MDA-MB435 cell line lysates (35ug/lane). DMC1 (arrow) was detected using the purified Pab.



Formalin-fixed and paraffin-embedded human testis tissue reacted with DMC1 Antibody (N-term), which was peroxidase-conjugated to the secondary antibody, followed by DAB staining. This data demonstrates the use of this antibody for immunohistochemistry; clinical relevance has not been evaluated.



DMC1 Antibody (N-term) (Cat. #AP9329a) flow cytometric analysis of CEM cells (bottom histogram) compared to a negative control cell (top histogram).FITC-conjugated goat-anti-rabbit secondary antibodies were used for the analysis.

Please note: All products are 'FOR RESEARCH USE ONLY. NOT FOR USE IN DIAGNOSTIC OR THERAPEUTIC PROCEDURES'.