

# PRCC Rabbit Polyclonal Antibody

PRCC Rabbit Polyclonal Antibody

Catalog # AP93453

## Product Information

---

<b>Application</b>	WB
<b>Primary Accession</b>	<a href="#">Q92733</a>
<b>Reactivity</b>	Rat, Human, Mouse
<b>Host</b>	Polyclonal, Rabbit, IgG
<b>Clonality</b>	Polyclonal
<b>Calculated MW</b>	52418

## Additional Information

---

<b>Gene ID</b>	5546
<b>Other Names</b>	Proline-rich protein PRCC, Papillary renal cell carcinoma translocation-associated gene protein, PRCC, TPRC
<b>Dilution</b>	WB~~1:1000
<b>Storage Conditions</b>	-20°C

## Protein Information

---

<b>Name</b>	PRCC
<b>Synonyms</b>	TPRC
<b>Function</b>	May regulate cell cycle progression through interaction with MAD2L2.
<b>Cellular Location</b>	Nucleus.
<b>Tissue Location</b>	Ubiquitous in fetal and adult tissues.

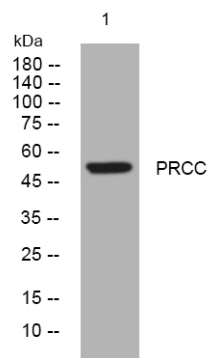
## Background

---

This gene encodes a protein that may play a role in pre-mRNA splicing. Chromosomal translocations (X;1)(p11;q21) that result in fusion of this gene to TFE3 (GeneID 7030) have been associated with papillary renal cell carcinoma. A PRCC-TFE3 fusion protein is expressed in affected carcinomas and is likely associated with altered gene transactivation. This fusion protein has also been associated with disruption of the cell cycle.[provided by RefSeq, Aug 2010],

## Images

---



Western blot analysis of lysates from MCF-7 cells, primary antibody was diluted at 1:1000, 4°over night

Please note: All products are 'FOR RESEARCH USE ONLY. NOT FOR USE IN DIAGNOSTIC OR THERAPEUTIC PROCEDURES'.