

GALR1 Antibody (Center)

Affinity Purified Rabbit Polyclonal Antibody (Pab)

Catalog # AP9346c

Product Information

Application	FC, WB, E
Primary Accession	P47211
Reactivity	Human
Host	Rabbit
Clonality	Polyclonal
Isotype	Rabbit IgG
Clone Names	RB24021
Calculated MW	38953
Antigen Region	174-200

Additional Information

Gene ID	2587
Other Names	Galanin receptor type 1, GAL1-R, GALR-1, GALR1, GALNR, GALNR1
Target/Specificity	This GALR1 antibody is generated from rabbits immunized with a KLH conjugated synthetic peptide between 174-200 amino acids from the Central region of human GALR1.
Dilution	FC~~1:10~50 WB~~1:1000 E~~Use at an assay dependent concentration.
Format	Purified polyclonal antibody supplied in PBS with 0.09% (W/V) sodium azide. This antibody is purified through a protein A column, followed by peptide affinity purification.
Storage	Maintain refrigerated at 2-8°C for up to 2 weeks. For long term storage store at -20°C in small aliquots to prevent freeze-thaw cycles.
Precautions	GALR1 Antibody (Center) is for research use only and not for use in diagnostic or therapeutic procedures.

Protein Information

Name	GALR1
Synonyms	GALNR, GALNR1
Function	Receptor for the hormone galanin. The activity of this receptor is mediated by G proteins that inhibit adenylate cyclase activity.

Background

GALR1 elicits a range of biological effects by interaction with specific G-protein-coupled receptors. Galanin receptors are seven-transmembrane proteins shown to activate a variety of intracellular second-messenger pathways. GALR1 inhibits adenylyl cyclase via a G protein of the Gi/Go family. GALR1 is widely expressed in the brain and spinal cord, as well as in peripheral sites such as the small intestine and heart.

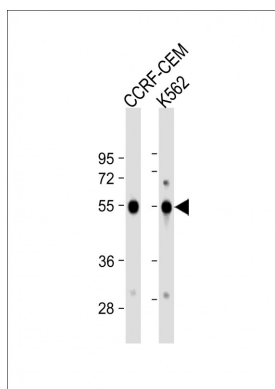
References

Borrito-Escuela,D.O. Biochem. Biophys. Res. Commun. 393 (4), 767-772 (2010)

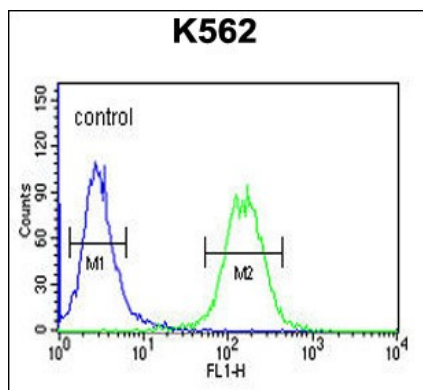
Gratacos,M. Am. J. Med. Genet. B Neuropsychiatr. Genet. 150B (6), 808-816

Marroni,F. Circ Cardiovasc Genet 2 (4), 322-328 (2009)

Images



All lanes : Anti-GALR1 Antibody (Center) at 1:1000 dilution
Lane 1: CCRF-CEM whole cell lysate Lane 2: K562 whole cell lysate
Lysates/proteins at 20 µg per lane. Secondary Goat Anti-Rabbit IgG, (H+L), Peroxidase conjugated at 1/10000 dilution. Predicted band size : 39 kDa
Blocking/Dilution buffer: 5% NFDM/TBST.



GALR1 Antibody (Center) (Cat. #AP9346c) flow cytometric analysis of K562 cells (right histogram) compared to a negative control cell (left histogram). FITC-conjugated goat-anti-rabbit secondary antibodies were used for the analysis.

Please note: All products are 'FOR RESEARCH USE ONLY. NOT FOR USE IN DIAGNOSTIC OR THERAPEUTIC PROCEDURES'.