

# 1A32 Rabbit Polyclonal Antibody

1A32 Rabbit Polyclonal Antibody  
Catalog # AP93521

## Product Information

---

<b>Application</b>	WB
<b>Primary Accession</b>	<a href="#">P10314</a>
<b>Reactivity</b>	Human, Rat, Mouse
<b>Host</b>	Polyclonal, Rabbit,IgG
<b>Clonality</b>	Polyclonal

## Additional Information

---

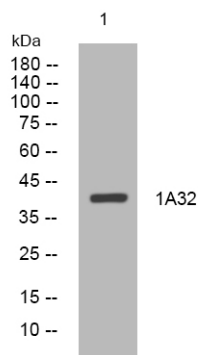
<b>Dilution</b>	WB~~1:1000
<b>Storage Conditions</b>	-20°C

## Protein Information

---

## Images

---



Western blot analysis of lysates from U2OS cells, primary antibody was diluted at 1:1000, 4° over night

Please note: All products are 'FOR RESEARCH USE ONLY. NOT FOR USE IN DIAGNOSTIC OR THERAPEUTIC PROCEDURES'.