

ENO1 (9I18) Rabbit Monoclonal Antibody

ENO1 (9I18) Rabbit Monoclonal Antibody

Catalog # AP93648

Product Information

Application	WB, IHC, IF, FC, ICC, IP
Primary Accession	P06733
Reactivity	Rat, Human, Mouse
Clonality	Monoclonal
Calculated MW	47169

Additional Information

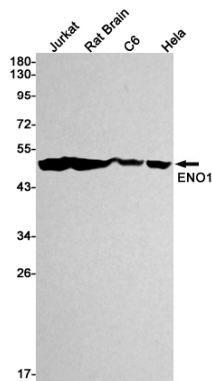
Gene ID	2023
Other Names	Alpha-enolase, 4.2.1.11, 2-phospho-D-glycerate hydro-lyase, C-myc promoter-binding protein, Enolase 1, MBP-1, MPB-1, Non-neural enolase, NNE, Phosphopyruvate hydratase, Plasminogen-binding protein, ENO1, ENO1L1, MBPB1, MPB1
Dilution	WB~~1:1000 IHC~~1:100~500 IF~~1:50~200 FC~~1:10~50 ICC~~N/A IP~~N/A
Storage Conditions	-20°C

Protein Information

Name	ENO1
Synonyms	ENO1L1, MBPB1, MPB1
Function	Glycolytic enzyme the catalyzes the conversion of 2- phosphoglycerate to phosphoenolpyruvate (PubMed: 1369209 , PubMed: 29775581). In addition to glycolysis, involved in various processes such as growth control, hypoxia tolerance and allergic responses (PubMed: 10802057 , PubMed: 12666133 , PubMed: 2005901 , PubMed: 29775581). May also function in the intravascular and pericellular fibrinolytic system due to its ability to serve as a receptor and activator of plasminogen on the cell surface of several cell-types such as leukocytes and neurons (PubMed: 12666133). Stimulates immunoglobulin production (PubMed: 1369209).
Cellular Location	Cytoplasm. Cell membrane. Cytoplasm, myofibril, sarcomere, M line. Note=Can translocate to the plasma membrane in either the homodimeric (alpha/alpha) or heterodimeric (alpha/gamma) form. ENO1 is localized to the M line
Tissue Location	The alpha/alpha homodimer is expressed in embryo and in most adult tissues. The alpha/beta heterodimer and the beta/beta homodimer are found

in striated muscle, and the alpha/gamma heterodimer and the gamma/gamma homodimer in neurons

Images



Western blot detection of ENO1 in Jurkat, Rat Brain, C6, HeLa cell lysates using ENO1 antibody(1:1000 diluted).

Please note: All products are 'FOR RESEARCH USE ONLY. NOT FOR USE IN DIAGNOSTIC OR THERAPEUTIC PROCEDURES'.