

MCM2 (1K1) Rabbit Monoclonal Antibody

MCM2 (1K1) Rabbit Monoclonal Antibody
Catalog # AP93651

Product Information

| | |
|--------------------------|------------------------|
| Application | WB, IHC-P, IF, ICC, FC |
| Primary Accession | P49736 |
| Reactivity | Human, Mouse, Rat |
| Clonality | Monoclonal |
| Calculated MW | 101896 |

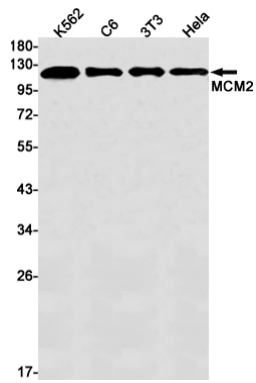
Additional Information

| | |
|---------------------------|---|
| Gene ID | 4171 |
| Other Names | DNA replication licensing factor MCM2, 3.6.4.12, Minichromosome maintenance protein 2 homolog, Nuclear protein BM28, MCM2 (HGNC:6944) |
| Dilution | WB~~1:1000 IHC-P~~N/A IF~~1:50~200 ICC~~N/A FC~~1:10~50 |
| Storage Conditions | -20°C |

Protein Information

| | |
|--------------------------|--|
| Name | MCM2 (HGNC:6944) |
| Function | Acts as a component of the MCM2-7 complex (MCM complex) which is the replicative helicase essential for 'once per cell cycle' DNA replication initiation and elongation in eukaryotic cells. Core component of CDC45-MCM-GINS (CMG) helicase, the molecular machine that unwinds template DNA during replication, and around which the replisome is built (PubMed: 32453425 , PubMed: 34694004 , PubMed: 34700328 , PubMed: 35585232). The active ATPase sites in the MCM2-7 ring are formed through the interaction surfaces of two neighboring subunits such that a critical structure of a conserved arginine finger motif is provided in trans relative to the ATP-binding site of the Walker A box of the adjacent subunit. The six ATPase active sites, however, are likely to contribute differentially to the complex helicase activity (PubMed: 32453425). Required for the entry in S phase and for cell division (PubMed: 8175912). Plays a role in terminally differentiated hair cells development of the cochlea and induces cells apoptosis (PubMed: 26196677). |
| Cellular Location | Nucleus. Chromosome. Note=Associated with chromatin before the formation of nuclei and detaches from it as DNA replication progresses. {ECO:0000250 UniProtKB:P55861} |

Images



Western blot detection of MCM2 in K562,C6,3T3,HeLa cell lysates using MCM2 antibody(1:1000 diluted).

Please note: All products are 'FOR RESEARCH USE ONLY. NOT FOR USE IN DIAGNOSTIC OR THERAPEUTIC PROCEDURES'.