

Cyclin A2 (16R6) Rabbit Monoclonal Antibody

Cyclin A2 (16R6) Rabbit Monoclonal Antibody

Catalog # AP93678

Product Information

Application	WB, IHC, IF, ICC
Primary Accession	P20248
Reactivity	Rat, Human, Mouse
Clonality	Monoclonal
Calculated MW	48551

Additional Information

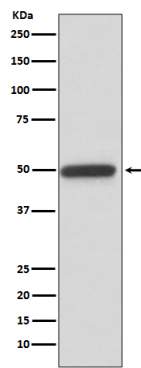
Gene ID	890
Other Names	Cyclin-A2 {ECO:0000312 HGNC:HGNC:1578}, Cyclin-A, Cyclin A, CCNA2 (HGNC:1578)
Dilution	WB~~1:1000 IHC~~1:100~500 IF~~1:50~200 ICC~~N/A
Storage Conditions	-20°C

Protein Information

Name	CCNA2 (HGNC:1578)
Function	Cyclin which controls both the G1/S and the G2/M transition phases of the cell cycle. Functions through the formation of specific serine/threonine protein kinase holoenzyme complexes with the cyclin- dependent protein kinases CDK1 or CDK2. The cyclin subunit confers the substrate specificity of these complexes and differentially interacts with and activates CDK1 and CDK2 throughout the cell cycle.
Cellular Location	Nucleus. Cytoplasm. Note=Exclusively nuclear during interphase (PubMed:1312467). Detected in the nucleus and the cytoplasm at prophase (PubMed:1312467). Cytoplasmic when associated with SCAPER (PubMed:17698606).

Images

Western blot analysis of Cyclin A2 expression in Jurkat cell lysate.



Please note: All products are 'FOR RESEARCH USE ONLY. NOT FOR USE IN DIAGNOSTIC OR THERAPEUTIC PROCEDURES'.