

Phospho-Smad2 (S250) (12P10) Rabbit Monoclonal Antibody

Phospho-Smad2 (S250) (12P10) Rabbit Monoclonal Antibody
Catalog # AP93681

Product Information

Application	WB, FC
Primary Accession	Q15796
Reactivity	Rat, Human, Mouse
Clonality	Monoclonal
Calculated MW	52306

Additional Information

Gene ID	4087
Other Names	Mothers against decapentaplegic homolog 2, MAD homolog 2, Mothers against DPP homolog 2, JV18-1, Mad-related protein 2, hMAD-2, SMAD family member 2, SMAD 2, Smad2, hSMAD2, SMAD2, MADH2, MADR2
Dilution	WB~~1:1000 FC~~1:10~50
Storage Conditions	-20°C

Protein Information

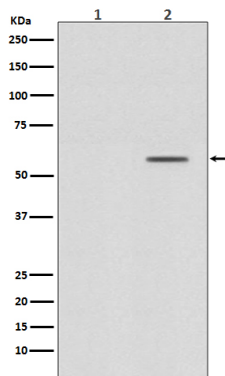
Name	SMAD2
Synonyms	MADH2, MADR2
Function	Receptor-regulated SMAD (R-SMAD) that is an intracellular signal transducer and transcriptional modulator activated by TGF-beta (transforming growth factor) and activin type 1 receptor kinases. Binds the TRE element in the promoter region of many genes that are regulated by TGF-beta and, on formation of the SMAD2/SMAD4 complex, activates transcription. Promotes TGFB1-mediated transcription of odontoblastic differentiation genes in dental papilla cells (By similarity). Positively regulates PDPK1 kinase activity by stimulating its dissociation from the 14-3-3 protein YWHAQ which acts as a negative regulator. May act as a tumor suppressor in colorectal carcinoma (PubMed: 8752209).
Cellular Location	Cytoplasm. Nucleus. Note=Cytoplasmic and nuclear in the absence of TGF-beta. On TGF-beta stimulation, migrates to the nucleus when complexed with SMAD4 or with IPO7 (PubMed:21145499, PubMed:9865696). On dephosphorylation by phosphatase PPM1A, released from the SMAD2/SMAD4 complex, and exported out of the nucleus by interaction with RANBP1

(PubMed:16751101, PubMed:19289081). Localized mainly to the nucleus in the early stages of embryo development with expression becoming evident in the cytoplasm at the blastocyst and epiblast stages (By similarity). {ECO:0000250|UniProtKB:Q62432, ECO:0000269|PubMed:16751101, ECO:0000269|PubMed:19289081, ECO:0000269|PubMed:21145499, ECO:0000269|PubMed:9865696}

Tissue Location

Expressed at high levels in skeletal muscle, endothelial cells, heart and placenta.

Images



Western blot analysis of Phospho-Smad2 (S250) expression in (1) HeLa cell treated with alkaline phosphatase lysate; (2) HeLa cell lysate.

Please note: All products are 'FOR RESEARCH USE ONLY. NOT FOR USE IN DIAGNOSTIC OR THERAPEUTIC PROCEDURES'.