

CDC45 (13U18) Rabbit Monoclonal Antibody

CDC45 (13U18) Rabbit Monoclonal Antibody

Catalog # AP93686

Product Information

Application	WB, IHC, IF, FC, ICC
Primary Accession	O75419
Reactivity	Rat, Human, Mouse
Clonality	Monoclonal
Calculated MW	65569

Additional Information

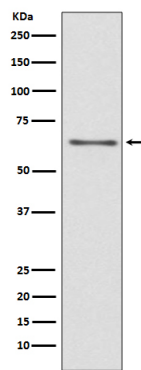
Gene ID	8318
Other Names	Cell division control protein 45 homolog, PORC-PI-1, CDC45 (HGNC:1739), CDC45L, CDC45L2
Dilution	WB~~1:1000 IHC~~1:100~500 IF~~1:50~200 FC~~1:10~50 ICC~~N/A
Storage Conditions	-20°C

Protein Information

Name	CDC45 (HGNC:1739)
Synonyms	CDC45L, CDC45L2
Function	Required for initiation of chromosomal DNA replication. Core component of CDC45-MCM-GINS (CMG) helicase, the molecular machine that unwinds template DNA during replication, and around which the replisome is built.
Cellular Location	Nucleus. Chromosome. Note=Associates with chromatin
Tissue Location	Widely expressed, highest levels are found in adult testis and thymus and in fetal liver

Images

Western blot analysis of CDC45 expression in Jurkat cell lysate.



Please note: All products are 'FOR RESEARCH USE ONLY. NOT FOR USE IN DIAGNOSTIC OR THERAPEUTIC PROCEDURES'.