

Cdc27/APC3 (19P19) Rabbit Monoclonal Antibody

Cdc27/APC3 (19P19) Rabbit Monoclonal Antibody

Catalog # AP93688

Product Information

| | |
|-------------------|------------------------|
| Application | WB |
| Primary Accession | P30260 |
| Reactivity | Rat, Human, Mouse |
| Clonality | Monoclonal |
| Calculated MW | 91867 |

Additional Information

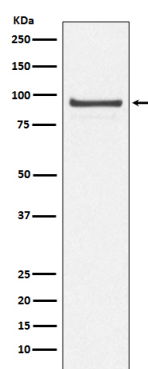
| | |
|--------------------|--|
| Gene ID | 996 |
| Other Names | Cell division cycle protein 27 homolog, Anaphase-promoting complex subunit 3, APC3, CDC27 homolog, CDC27Hs, H-NUC, CDC27, ANAPC3, D0S1430E, D17S978E |
| Dilution | WB~~1:1000 |
| Storage Conditions | -20°C |

Protein Information

| | |
|-------------------|--|
| Name | CDC27 |
| Synonyms | ANAPC3, D0S1430E, D17S978E |
| Function | Component of the anaphase promoting complex/cyclosome (APC/C), a cell cycle-regulated E3 ubiquitin ligase that controls progression through mitosis and the G1 phase of the cell cycle (PubMed: 18485873). The APC/C complex acts by mediating ubiquitination and subsequent degradation of target proteins: it mainly mediates the formation of 'Lys-11'-linked polyubiquitin chains and, to a lower extent, the formation of 'Lys-48'- and 'Lys-63'-linked polyubiquitin chains (PubMed: 18485873). The APC/C complex catalyzes assembly of branched 'Lys-11'-/'Lys-48'-linked branched ubiquitin chains on target proteins (PubMed: 29033132). |
| Cellular Location | Nucleus. Cytoplasm, cytoskeleton, spindle |

Images

Western blot analysis of Cdc27/APC3 expression in 293T



cell lysate.

Please note: All products are 'FOR RESEARCH USE ONLY. NOT FOR USE IN DIAGNOSTIC OR THERAPEUTIC PROCEDURES'.