

# GABARAP (11T4) Rabbit Monoclonal Antibody

GABARAP (11T4) Rabbit Monoclonal Antibody

Catalog # AP93698

## Product Information

Application	WB, IHC-P
Primary Accession	<a href="#">O95166</a>
Reactivity	Human, Rat
Clonality	Monoclonal
Calculated MW	13918

## Additional Information

Gene ID	11337
Other Names	Gamma-aminobutyric acid receptor-associated protein, GABA(A) receptor-associated protein, MM46, GABARAP ( <a href="#">HGNC:4067</a> ), FLC3B
Dilution	WB~~1:1000 IHC-P~~N/A
Storage Conditions	-20°C

## Protein Information

Name	GABARAP ( <a href="#">HGNC:4067</a> )
Synonyms	FLC3B
Function	<p>Ubiquitin-like modifier that plays a role in intracellular transport of GABA(A) receptors and its interaction with the cytoskeleton (PubMed:<a href="#">9892355</a>). Involved in autophagy: while LC3s are involved in elongation of the phagophore membrane, the GABARAP/GATE-16 subfamily is essential for a later stage in autophagosome maturation (PubMed:<a href="#">15169837</a>, PubMed:<a href="#">20562859</a>, PubMed:<a href="#">22948227</a>). Through its interaction with the reticulophagy receptor TEX264, participates in the remodeling of subdomains of the endoplasmic reticulum into autophagosomes upon nutrient stress, which then fuse with lysosomes for endoplasmic reticulum turnover (PubMed:<a href="#">31006538</a>). Also required for the local activation of the CUL3(KBTBD6/7) E3 ubiquitin ligase complex, regulating ubiquitination and degradation of TIAM1, a guanyl-nucleotide exchange factor (GEF) that activates RAC1 and downstream signal transduction (PubMed:<a href="#">25684205</a>). Thereby, regulates different biological processes including the organization of the cytoskeleton, cell migration and proliferation (PubMed:<a href="#">25684205</a>). Involved in apoptosis (PubMed:<a href="#">15977068</a>).</p>
Cellular Location	Cytoplasmic vesicle, autophagosome membrane. Endomembrane system {ECO:0000250 UniProtKB:P60517}. Cytoplasm, cytoskeleton

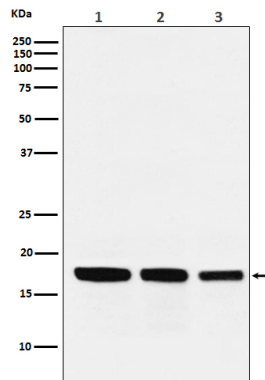
{ECO:0000250|UniProtKB:P60517}. Golgi apparatus membrane  
{ECO:0000250|UniProtKB:P60517}. Cytoplasmic vesicle  
{ECO:0000250|UniProtKB:P60517}. Note=Largely associated with intracellular membrane structures including the Golgi apparatus and postsynaptic cisternae. Colocalizes with microtubules (By similarity) Also localizes to discrete punctae along the ciliary axoneme (By similarity).  
{ECO:0000250|UniProtKB:P60517, ECO:0000250|UniProtKB:Q9DCD6}

## Tissue Location

Heart, brain, placenta, liver, skeletal muscle, kidney and pancreas.

## Images

---



Western blot analysis of GABARAP expression in (1) HepG2 cell lysate; (2) Mouse kidney lysate; (3) Rat heart lysate.

Please note: All products are 'FOR RESEARCH USE ONLY. NOT FOR USE IN DIAGNOSTIC OR THERAPEUTIC PROCEDURES'.